



## B

DEF

## Contact material

Contact material

### Cable connectors

### Recommended configuration of plated through holes for press-in termination

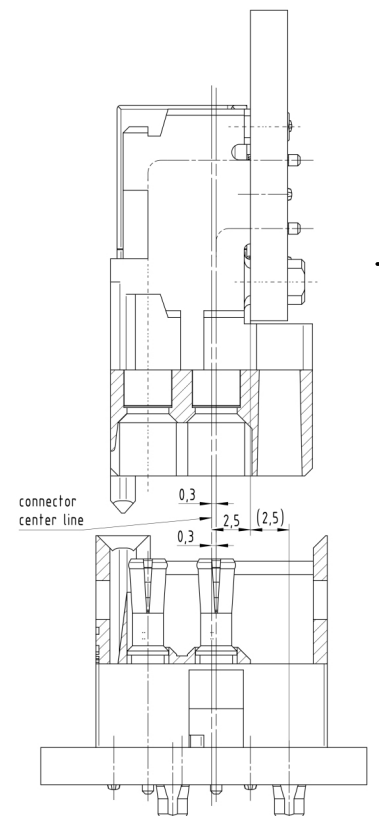
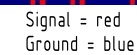
**Mating male and female**

Mini Coax standard  
straight = female = jack  
for backplane

Mini Coax standard  
angled = male = plug  
for daughtercards



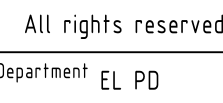
A detailed 3D perspective diagram of a multi-pin connector module. The module is shown with its top cover partially removed, revealing a dense array of pins. Labels with leader lines point to specific components: 'grounding pin' points to a pin on the left side of the array, 'signal pin' points to a pin in the center-right, and 'module' points to the main body of the connector assembly.



Scale  
1:1

Ref.
Sub.

Sub.	
------	--



Created by  
STORCK

Title	Mini Coax connector
-------	---------------------

Type DS

Inspected by  
DAHMS

Inspected by  
DAHMS

Standardisation  
302077

Date  
2020 10 15

State  
Final Release

Doc-Key / ECM-Nr. 100568364/UGD/001/C 500000181362
--

Rev. C

/001/C