

Han ES 10 POS. M INSERT

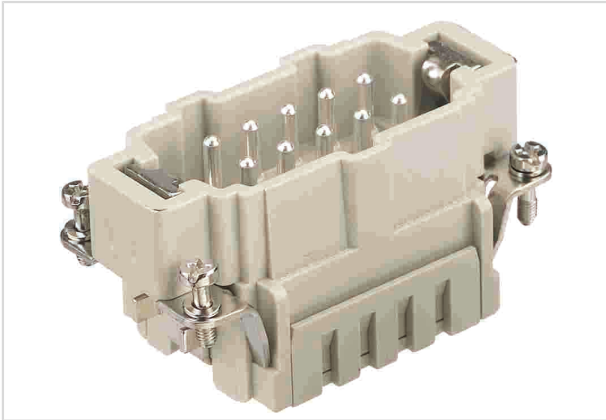


Image is for illustration purposes only. Please refer to product description.

Part number	09 33 010 2616
Specification	Han ES 10 POS. M INSERT
HARTING eCatalogue	https://b2b.harting.com/09330102616

Identification

Category	Inserts
Series	Han [®] ES

Version

Termination method	Cage-clamp termination
Gender	Male
Size	10 B
Number of contacts	10
PE contact	Yes

Technical characteristics

Conductor cross-section	0.14 ... 2.5 mm ²
Conductor cross-section	AWG 26 ... AWG 14
Rated current	16 A
Rated voltage	500 V
Rated impulse voltage	6 kV
Pollution degree	3
Rated voltage acc. to UL	600 V
Rated voltage acc. to CSA	600 V
Insulation resistance	>10 ¹⁰ Ω
Contact resistance	≤3 mΩ
Stripping length	7 ... 9 mm
Limiting temperature	-40 ... +125 °C



Pushing Performance

Technical characteristics

Mating cycles	≥500
---------------	------

Material properties

Material (insert)	Polycarbonate (PC)
Colour (insert)	RAL 7032 (pebble grey)
Material (contacts)	Copper alloy
Surface (contacts)	Silver plated
Material flammability class acc. to UL 94	V-0
RoHS	compliant with exemption
RoHS exemptions	6(c): Copper alloy containing up to 4 % lead by weight
ELV status	compliant with exemption
China RoHS	50
REACH Annex XVII substances	No
REACH ANNEX XIV substances	No
REACH SVHC substances	Yes
REACH SVHC substances	Lead Potassium 1,1,2,2,3,3,4,4,4-nonafluorobutane-1-sulphonate

Specifications and approvals

Specifications	EN 60664-1 IEC 61984
Approvals	DNV GL
UL / CSA	UL 1977 ECBT2.E235076 UL 2237 PVVA2.E318390 CSA-C22.2 No. 182.3 PVVA8.E318390

Commercial data

Packaging size	1
Net weight	59 g
Country of origin	Germany
European customs tariff number	85366990
eCl@ss	27440205 Contact insert for industrial connectors