

## Han K 4/0 Pin Male Insert

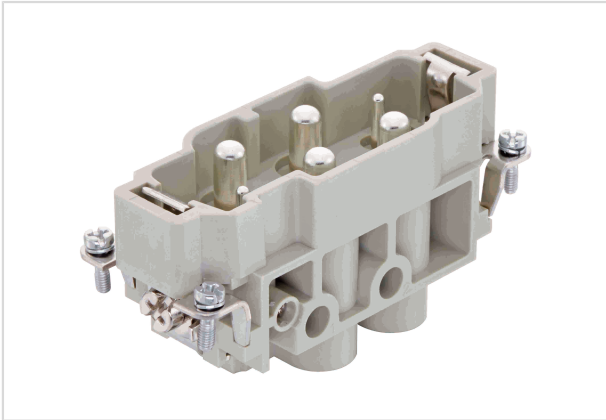


Image is for illustration purposes only. Please refer to product description.

|                    |   |
|--------------------|---|
| Part number        | 09 38 006 2611  |
| Specification      | Han K 4/0 Pin Male Insert   |
| HARTING eCatalogue | <a href="https://b2b.harting.com/09380062611">https://b2b.harting.com/09380062611</a> |

### Identification

|                |                        |
|----------------|------------------------|
| Category       | Inserts                |
| Series         | Han-Com <sup>®</sup>   |
| Identification | Han <sup>®</sup> K 4/0 |

### Version

|                    |                   |
|--------------------|-------------------|
| Termination method | Screw termination |
| Gender             | Male              |
| Size               | 16 B              |
| Number of contacts | 4                 |
| PE contact         | Yes               |

### Technical characteristics

|                           |                            |
|---------------------------|----------------------------|
| Conductor cross-section   | 1.5 ... 16 mm <sup>2</sup> |
| Rated current             | 80 A                       |
| Rated voltage             | 830 V                      |
| Rated impulse voltage     | 8 kV                       |
| Pollution degree          | 3                          |
| Rated current acc. to UL  | 80 A                       |
| Rated voltage acc. to UL  | 600 V                      |
| Rated current acc. to CSA | 80 A                       |
| Rated voltage acc. to CSA | 300 V                      |
| Insulation resistance     | >10 <sup>10</sup> Ω        |
| Contact resistance        | ≤0.3 mΩ                    |



Pushing Performance

## Technical characteristics

|                      |                              |
|----------------------|------------------------------|
| Stripping length     | 14 mm                        |
| Tightening torque    | 1.2 Nm @ 1.5 mm <sup>2</sup> |
|                      | 2 Nm @ 2.5 mm <sup>2</sup>   |
|                      | 3 Nm @ 4 mm <sup>2</sup>     |
|                      | 3 Nm @ 6 mm <sup>2</sup>     |
|                      | 3 Nm @ 10 mm <sup>2</sup>    |
|                      | 3 Nm @ 16 mm <sup>2</sup>    |
| Limiting temperature | -40 ... +125 °C              |
| Mating cycles        | ≥500                         |

## Material properties

|   |   |
|---|---|
| Material (insert)                         | Polycarbonate (PC)  |
| Colour (insert)                           | RAL 7032 (pebble grey)  |
| Material (contacts)                       | Copper alloy  |
| Surface (contacts)                        | Silver plated   |
| Material flammability class acc. to UL 94 | V-0   |
| RoHS                                      | compliant with exemption  |
| RoHS exemptions                           | 6(a) / 6(a)-I: Lead as an alloying element in steel for machining purposes and in galvanised steel containing up to 0,35 % lead by weight / Lead as an alloying element in steel for machining purposes containing up to 0,35 % lead by weight and in batch hot dip galvanised steel components containing up to 0,2 % lead by weight |
|   | 6(c): Copper alloy containing up to 4 % lead by weight  |
| ELV status                                | compliant with exemption  |
| China RoHS                                | 50  |
| REACH Annex XVII substances               | No  |
| REACH ANNEX XIV substances                | No  |
| REACH SVHC substances                     | Yes   |
| REACH SVHC substances                     | Lead  |

## Specifications and approvals

|                |                                   |
|----------------|-----------------------------------|
| Specifications | EN 60664-1                        |
|                | IEC 61984                         |
| Approvals      | DNV GL                            |
| UL / CSA       | UL 1977 ECBT2.E235076             |
|                | CSA-C22.2 No. 182.3 ECBT8.E235076 |

## Commercial data

|                |   |
|----------------|---|
| Packaging size | 1 |
|----------------|---|



Pushing Performance

## Commercial data

|                                |   |
|--------------------------------|---|
| Net weight                     | 113 g   |
| Country of origin              | Romania   |
| European customs tariff number | 85366990  |
| eCl@ss                         | 27440205 Contact insert for industrial connectors |