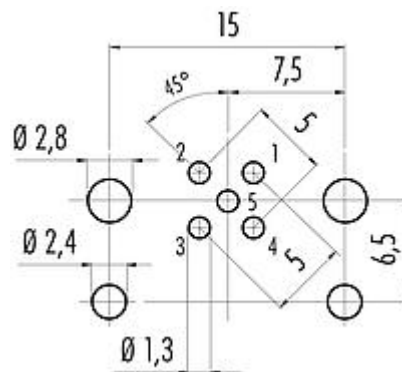


| | |
|---------------------|--|
| Product description | M12-A integrated plug, recessed, Contacts: 5, unshielded, dip-solder, IP67 |
| Area | M12-A series 713 |
| Part no. | 09 0433 216 05 |

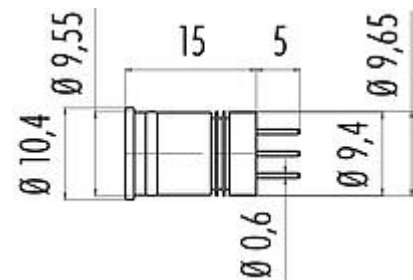
Illustration



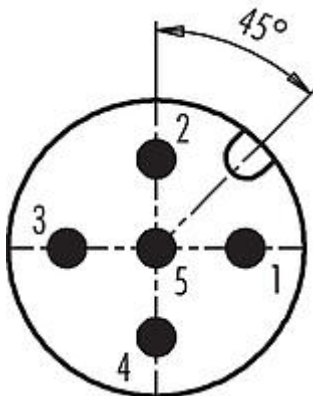
Conductor layout



Scale drawing



Contact arrangement (Plug-in side)



You can find the assembly instructions on the next page.

Technical data

General features

| | |
|--------------------------|---------------------------|
| Part no. | 09 0433 216 05 |
| Connector design | integrated plug, recessed |
| Version | male straight |
| Connector locking system | screw |
| Termination | dip-solder |
| Degree of protection | IP67 |

| | |
|---------------------|--|
| Product description | M12-A integrated plug, recessed, Contacts: 5, unshielded, dip-solder, IP67 |
| Area | M12-A series 713 |
| Part no. | 09 0433 216 05 |

| | |
|---------------------------|---------------------|
| Temperature range from/to | -40 °C / 85 °C |
| Mechanical operation | > 100 Mating cycles |
| Weight (g) | 0.98 |
| Customs tariff number | 85369010 |

Electrical parameters

| | |
|---------------------------|---------------------|
| Rated voltage | 60 V |
| Rated impulse voltage | 1500 V |
| Rated current (40 °C) | 4,0 A |
| Insulation resistance | > 10 ⁸ Ω |
| Pollution degree | 3 |
| Overvoltage category | II |
| Insulating material group | III |
| EMC compliance | unshielded |

Material

| | |
|-----------------------|--------------------------------------|
| Housing material | PA |
| Contact body material | PA |
| Contact material | CuZn (brass) |
| Contact plating | Au (gold) |
| REACH SVHC | CAS 7439-92-1 (Lead) |
| SCIP number | 40cf7959-3074-4393-a2c3-bdef2bbdc64c |

Classifications

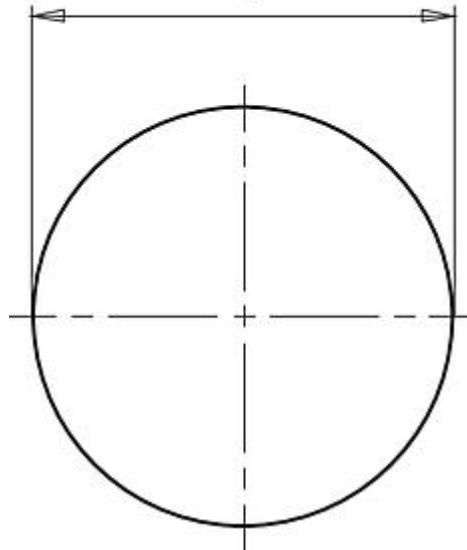
| | |
|-------------|-------------|
| eCl@ss 11.1 | 27-44-01-09 |
| ETIM 7.0 | EC003569 |

| | |
|---------------------|--|
| Product description | M12-A integrated plug, recessed, Contacts: 5, unshielded, dip-solder, IP67 |
| Area | M12-A series 713 |
| Part no. | 09 0433 216 05 |

Assembly instructions / Panel cut-out

Mounting hole

Ø 9,45



| | |
|---------------------|---|
| Product description | M12-A integrated plug, recessed, Contacts: 5, unshielded, dip-solder, IP67 |
| Area | M12-A series 713 |
| Part no. | 09 0433 216 05 |

General Disclaim Notice

The connectors have been developed for applications in plant engineering, control and electrical equipment construction. The user is responsible for checking whether the connectors can also be used in other areas of application.

Plug connectors with enclosure protection IP 67 and IP 68 are not suitable for use under water. When used outdoors, the plug connectors must be protected separately against corrosion. For further information on the IP protection classes, please refer to the "Technical Information" download centre.