

## Han 10B-HTE-LC-4 Pegs-M25

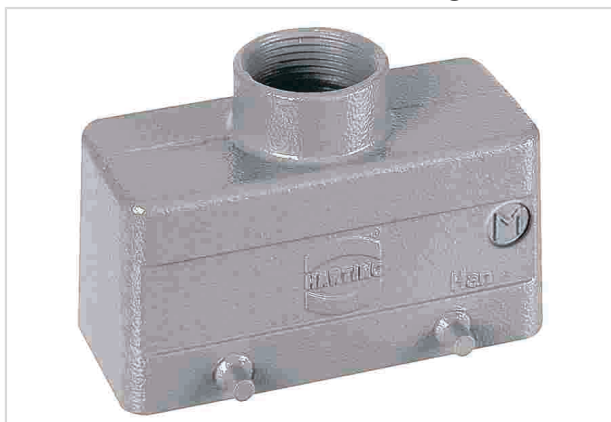


Image is for illustration purposes only. Please refer to product description.

|                    |   |
|--------------------|---|
| Part number        | 19 30 010 1421  |
| Specification      | Han 10B-HTE-LC-4 Pegs-M25   |
| HARTING eCatalogue | <a href="https://b2b.harting.com/19300101421">https://b2b.harting.com/19300101421</a> |

### Identification

|                          |                    |
|--------------------------|--------------------|
| Category                 | Hoods/Housings     |
| Series of hoods/housings | Han <sup>®</sup> B |
| Type of hood/housing     | Hood               |
| Type                     | Low construction   |

### Version

|                      |   |
|----------------------|---|
| Locking type         | Double locking lever                              |
| Size                 | 10 B  |
| Version              | Top entry   |
| Cable entry          | 1x M25  |
| Field of application | Standard hoods/housings for industrial connectors |

### Technical characteristics

|  |                 |
|--|-----------------|
| Limiting temperature                   | -40 ... +125 °C |
| Degree of protection acc. to IEC 60529 | IP65            |
|  | IP66            |
|  | IP67            |
| Type rating acc. to UL 50 / UL 50E     | 4               |
|  | 4X              |
|  | 12              |

### Material properties

|                         |                    |
|-------------------------|--------------------|
| Material (hood/housing) | Aluminium die-cast |
| Surface (hood/housing)  | Powder-coated      |



Pushing Performance

## Material properties

|                             |                      |
|-----------------------------|----------------------|
| Colour (hood/housing)       | RAL 7037 (dust grey) |
| RoHS                        | compliant            |
| ELV status                  | compliant            |
| China RoHS                  | e                    |
| REACH Annex XVII substances | No                   |
| REACH ANNEX XIV substances  | No                   |
| REACH SVHC substances       | No                   |

## Specifications and approvals

|           |  |
|-----------|--|
| Approvals | DNV GL   |
| UL / CSA  | UL 1977 ECBT2.E235076<br>CSA-C22.2 No. 182.3 ECBT8.E235076 |
| CE        | Yes  |

## Commercial data

|                                |  |
|--------------------------------|--|
| Packaging size                 | 1  |
| Net weight                     | 124 g                                    |
| Country of origin              | Germany                                  |
| European customs tariff number | 85389099                                 |
| eCl@ss                         | 27440202 Shell for industrial connectors |