

Current Sensor HCM 300A-0-20-CCA-T

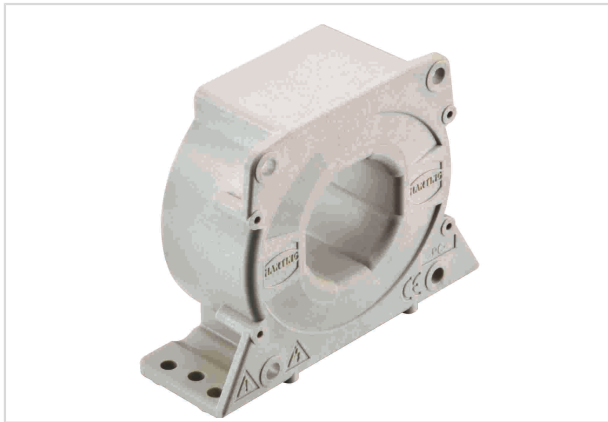


Image is for illustration purposes only. Please refer to product description.

Part number	20 31 030 0101
Specification	Current Sensor HCM 300A-0-20-CCA-T
HARTING eCatalogue	https://b2b.harting.com/20310300101

Identification

Series	HCM
Element	Current sensor
Sensor technology	Hall-Effekt Closed loop
Features	Hall effect compensated current sensor Measurable currents: AC, DC, pulsed, mixed ... High accuracy over the entire measuring range Galvanic insulation between primary and secondary current Switchboard mounting Housing material and potting mass have a flammability rating UL 94 V-0 Applications: frequency converters, electrical drives, switched mode power supplies, UPS

Version

Field of application	Industrial version
Termination	Metz Typ 320 (PT11503VBBN)
Pack contents	Counter connector included

Technical characteristics

I_{PN} Nominal primary current	300 A
I_{PM} Primary current, measuring range	0 ... ± 500 A
R_M Measuring resistance @ $I_{PM \max}$, $U_C \max$, $T_A \max$	5 ... 52 Ω For other primary currents see diagram.
I_{SN} Nominal secondary current	150 mA
K_N Turns ratio	1 : 2000
U_C Power supply	± 15 ... ± 24 V ± 5 %



Pushing Performance

Technical characteristics

I _C Current consumption @ U _{C min}	20 mA + I _S
X Overall accuracy @ I _{PN} , T _A = 25 °C	±0.5 %
E _L Linearity	<0.1 %
I _O Offset current @ I _P = 0 A, T _A = 25 °C	±0.3 mA
I _{OT} maximum temperature drift of I _O	±0.7 mA
t _r Response time @ I _{PN}	<1 μs
di/dt with optimal coupling	>100 A/μs
f Frequency	0 ... 100 kHz
T _A Ambient temperature	-40 ... +85 °C
T _S Storage temperature	-45 ... +90 °C
R _S Secondary coil resistance @ T _{A max}	31 Ω
U _D Test voltage, effective (50 Hz, 1 min)	3 kV Primary - secondary
U _{St} Rated impulse voltage (1,2/50 μs)	10 kV
U _B Rated voltage	600 V
Overvoltage category	III
Pollution degree	2
L _S Clearance distance	19.5 mm
K _S Creepage distance	26.3 mm
Tightening torque	3.2 Nm (4x steel screw M4 - Vertical) 3.2 Nm (4x steel screw M4 - Horizontal)

Material properties

Material (hood/housing)	Polycarbonate (PC)
Material flammability class acc. to UL 94	V-0
RoHS	compliant
ELV status	compliant
China RoHS	e
REACH Annex XVII substances	No
REACH ANNEX XIV substances	No



Pushing Performance

Material properties

REACH SVHC substances No

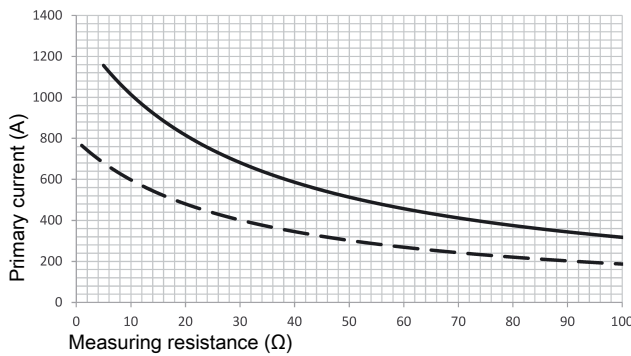
Specifications and approvals

Specifications	EN 50178 IEC 61373
Approvals	DNV GL
UL / CSA	UL 508 NMTR2.E359667 CSA-C22.2 No. 14-13 NMTR8.E359667
CE	Yes

Commercial data

Packaging size	1
Net weight	231 g
Country of origin	Germany
European customs tariff number	90303370
eCl@ss	27210902 Current transformer

Measuring resistance



— $U_C = \pm 24 \text{ V} - 5 \%$, $T_A = 85 \text{ °C}$

- - - $U_C = \pm 15 \text{ V} - 5 \%$, $T_A = 85 \text{ °C}$

Primary currents higher than I_{PM} only for peak!

Remark

- If I_P flows in the direction of the arrow I_S is positive.
- Over currents ($\gg I_{PN}$) or the missing of the supply voltage can cause an additional permanent magnetic offset.
- The temperature of the primary conductor may not exceed 100 °C .



Pushing Performance

Safety note



These transformers may only be used in electrical or power electronic applications which fulfill the relevant regulations (standards, EMC requirements,...).

Caution, risk of electric shock



- Pay attention to protect non-insulated high-power current carrying parts against direct contact (e.g. with a protective enclosure).
- When installing this sensor please make sure that the safe separation (between primary circuit and secondary circuit) is maintained over the whole circuits and their connections.
- The sensor may only be connected to a power supply respecting the SELV/PELV protective regulations according to EN 50 178. The installation of the power supply must be short-circuit-proof.
- Disconnecting the main power must be possible.
- The current sensors support a safe separation. The creepage and clearance distances are taken as a basis for the rated voltage. They are the shortest distance between the secondary connection and the sensor's window. The actual clearance and creepage distances depend on the position of the primary conductor respectively on the actual shortest distance between the primary conductor and the secondary connection.