



RADIAL[®]
MULTI CONTACT CONNECTORS

TECHNICAL DATA SHEET

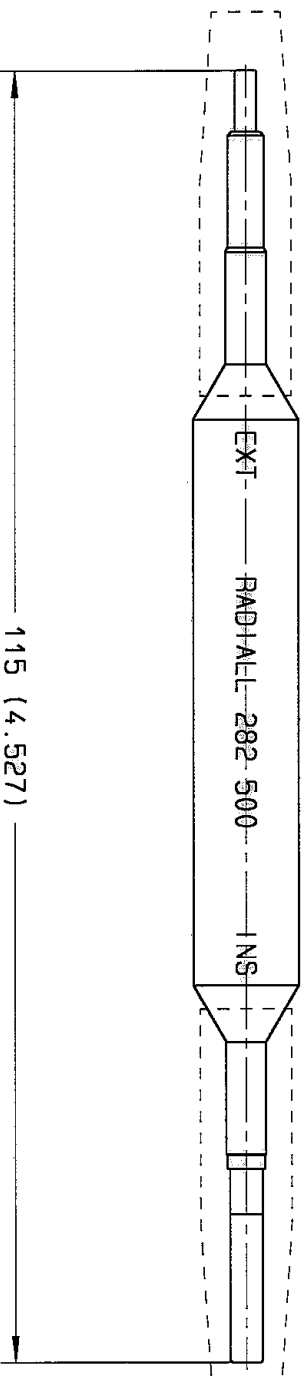
282 500

Series

INSERTION / EXTRACTION TOOL FOR
SIZE 22 FRONT RELEASE, FRONT REMOVABLE SOCKET CONTACT

Issue:
25 MARCH 2003

Page
1 / 2



MATERIAL AND FINISH:
 BODY: ALUMINUM ALLOY - BLACK ANODIZED
 INSERTION TERMINAL END: COPPER ALLOY - GOLD OVER NICKEL
 EXTRACTION TERMINAL END: STAINLESS STEEL - PASSIVATED
 EXTRACTION TERMINAL END: COPPER ALLOY - NICKEL
 INSERTION / EXTRACTION INSTRUCTIONS: SEE PAGE 2

This information is given as an indication. In the continual goal to improve our products, we reserve the right to make any modifications judged necessary.

CREATION
 PEN: .
 NOM: MACARI
 DATE: 29 MARCH 83
 APPR: . . .

ISSUE	Revisions	Name	APPROVED
25 MAR 03	MODIF DIAMETER WAS HEXAGON	COUTHON	<i>[Signature]</i>
07 FEB 01	REDRAWN BY CAD - ADDED INSTRUCTIONS	MACARI	

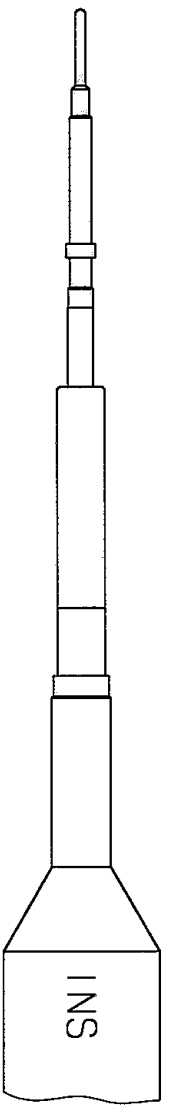
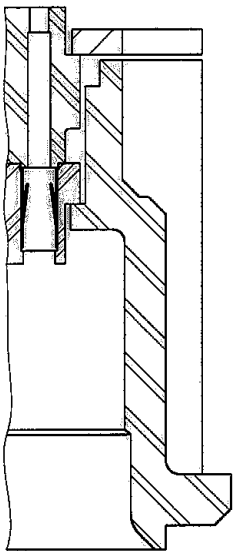
282500



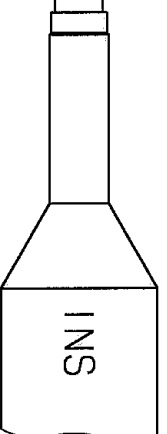
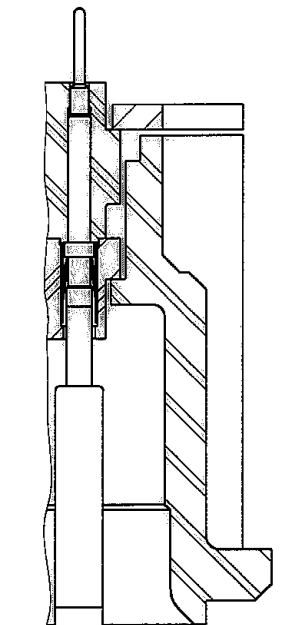
CONTACTS INSERTION / EXTRACTION INSTRUCTIONS

CONTACTS INSERTION INSTRUCTIONS

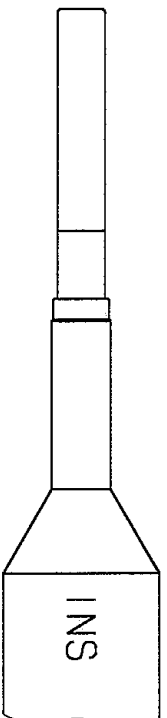
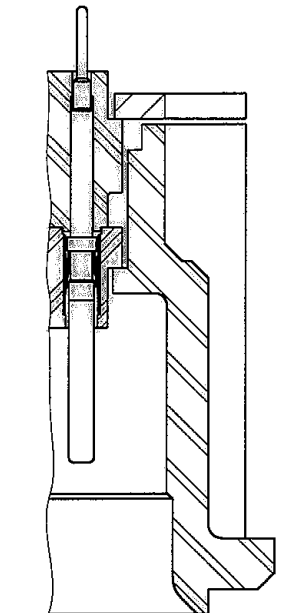
1/SLIDE THE CONTACT TIGHTLY INTO THE TOOL (INSERTION SIDE)
IT MUST BUTT AGAINST THE EXTREMITY OF THE TOOL



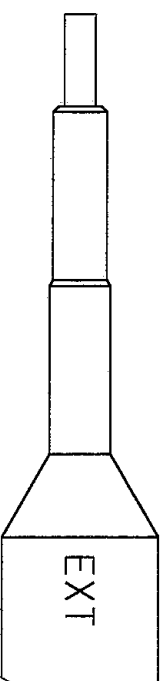
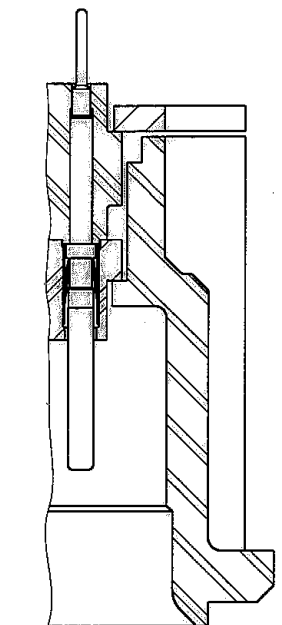
2/PUSH THE CONTACT COMPLETELY INTO THE INSERT



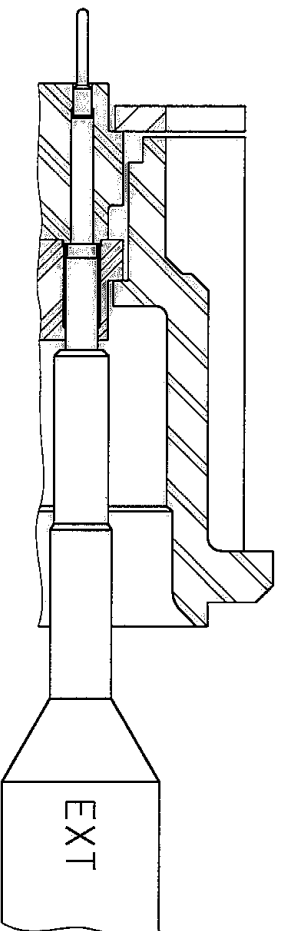
3/PULL OUT THE INSERTION TOOL. THE CONTACT IS NOW LOCKED INTO PLACE



CONTACTS EXTRACTION INSTRUCTIONS



1/SLIDE THE TOOL (EXTRACTION SIDE) ONTO THE CONTACT UNTIL ITS BUTTS AGAINST SKIRT
THE CONTACT IS NOW FREE



2/TAKE THE CONTACT OUT OF THE CAVITY BY PULLING BACK THE TOOL
TAKE THE CONTACT OUT OF THE TOOL

