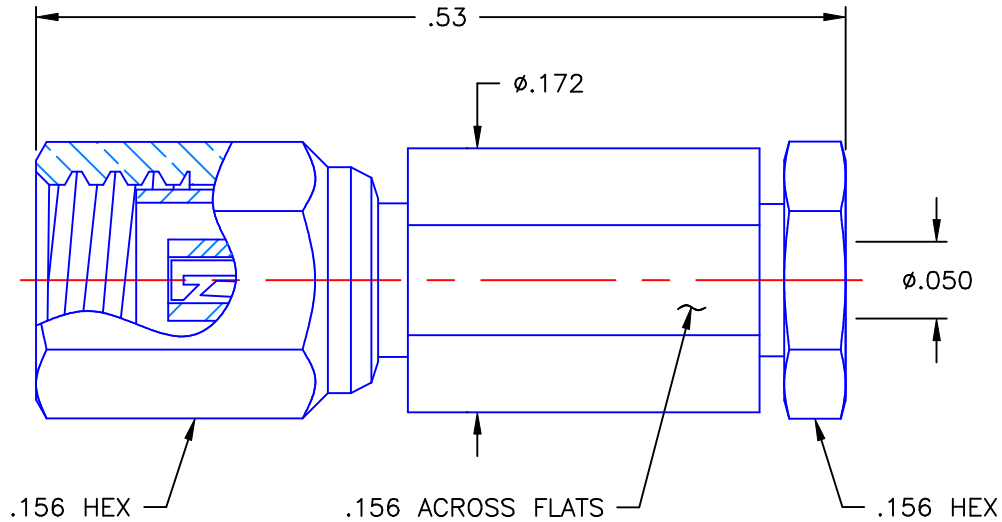


REVISIONS			
REV	DESCRIPTION	DATE	APPROVED
A	INITIAL RELEASE	01/02/08	A.D.M.



PROPRIETARY INFORMATION
 NOT TO BE RELEASED
 WITHOUT WRITTEN PERMISSION
 FROM AN AUTHORIZED
 REPRESENTATIVE OF
 APPLIED ENGINEERING PRODUCTS


NOTES:

MATERIALS:

1. INSULATORS = VIRGIN WHITE TEFLON PER ASTM D1710, GRADE 1, TYPE I, CLASS "B".
2. BACK NUT = BRASS PER ASTM B16, ALLOY C36000, TEMPER H02.
3. ALL OTHER METAL PARTS = BERYLLIUM COPPER PER ASTM B196, ALLOY C17300, TEMPER TD04.

FINISHES:

1. CONTACT = GOLD PLATE PER MIL-G-45204, TYPE II, CLASS 1, GRADE C, OVER .00010 TO .00020 STRESS FREE SULFAMATE NICKEL PER QQ-N-290.
2. ALL OTHER METAL PARTS = GOLD PLATE PER MIL-G-45204, TYPE II, CLASS 0, GRADE C, OVER .00010 TO .00020 COPPER STRIKE PER MIL-C-14550.

UNLESS OTHERWISE SPECIFIED DIMENSIONS ARE IN INCHES TOLERANCES ON	DWN:	DATE	 APPLIED ENGINEERING PRODUCTS 104 John W. Murphy Dr. New Haven, CT 06513
	A.D.M.	01/02/08	
	CHKD:	DATE	
DECIMAL	ANGLE	D.N.	01/02/08
		APVD:	DATE
		J.M.	01/02/08
		SSMC STRAIGHT FEMALE PLUG SOLDER/CLAMP TYPE FOR .047 S/R & SIMILAR CABLES	
REFERENCE:	MATERIALS & FINISHES:		SIZE
ORIGINATOR: A.D.M.	SEE NOTES		FSCM NO.
DATE: 01/02/08			DWG NO.
			7002-1542-011
			REV
			A
	SCALE 8:1		THIRD ANGLE PROJECTION
			SHEET 1 OF 1

7002-1542-011