

MATERIAL AND FINISHES:

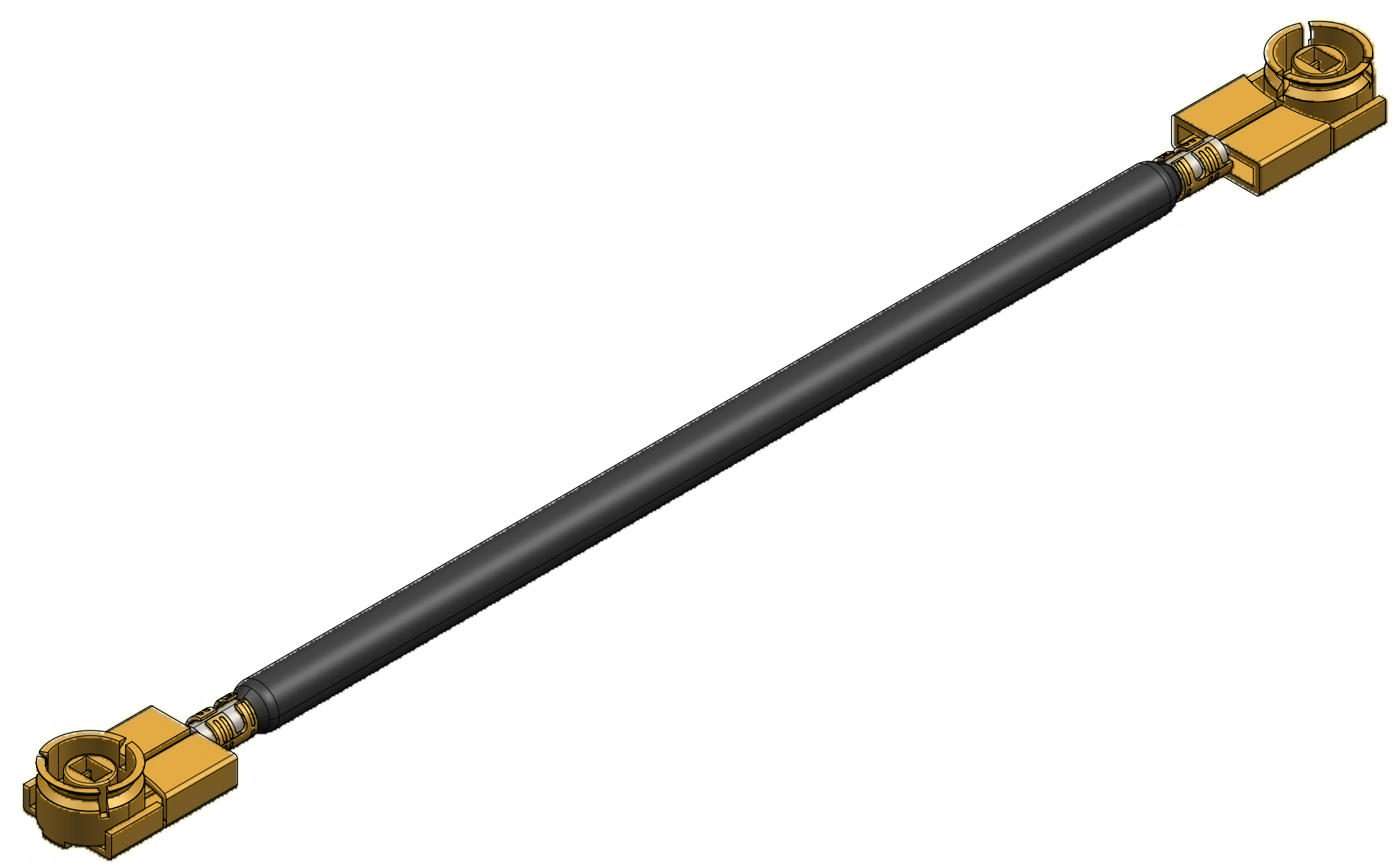
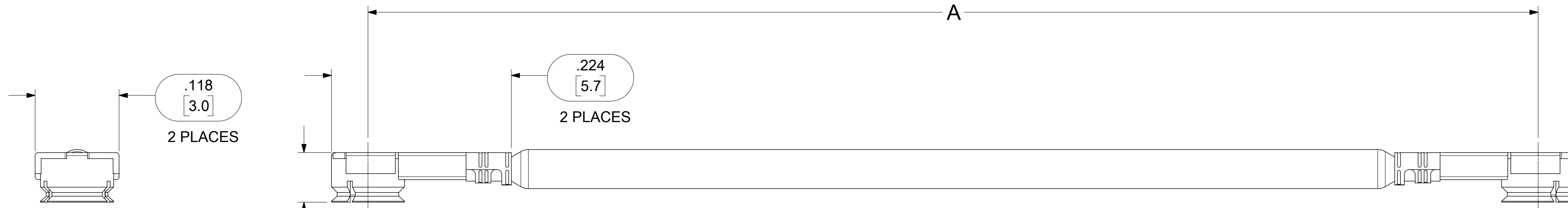
MCRF CONNECTORS:  
HOUSINGS: PHOSPHOR BRONZE  
FINISH: GOLD

MATED HEIGHT: .098 [2.50]

CONTACTS: PHOSPHOR BRONZE  
FINISH: GOLD

INSULATORS: PBT

CABLE: 1.37 OR EQUIVALENT  
COLOR: BLACK



73116-1520	2.756±.125	70.00±3.17	BULK
73116-0049	60.00±1.50	1524.0±38.1	SINGLE
73116-0048	7.500±.125	190.50±3.17	BULK
73116-0047	12.000±.250	304.80±6.34	SINGLE
73116-0046	9.000±.250	228.60±6.34	SINGLE
73116-0045	6.000±.125	152.40±3.17	SINGLE
73116-0044	3.000±.125	76.20±3.17	SINGLE
73116-0043	12.000±.250	304.80±6.34	BULK
73116-0042	9.000±.250	228.60±6.34	BULK
73116-0041	6.000±.125	152.40±3.17	BULK
73116-0040	3.000±.125	76.20±3.17	BULK
PART NO.	IN	MM	PACKAGING
	DIM A		

<b>SYMBOLS</b> DIMENSION UNITS SCALE CURRENT REV DESC: REDRAWN AND REVISED EC NO: 175770 DRWN: LMEIER 2018/04/26 CHK'D: SSSHAH 2018/04/30 APPR: AROBERTSON 2018/04/30 INITIAL REVISION: DRWN: JLEE02 2011/08/22 APPR: JWIENER 2011/09/02 THIRD ANGLE PROJECTION DRAWING SERIES C-SIZE 73116	THIS DRAWING CONTAINS INFORMATION THAT IS PROPRIETARY TO MOLEX ELECTRONIC TECHNOLOGIES, LLC AND SHOULD NOT BE USED WITHOUT WRITTEN PERMISSION																				
	GENERAL TOLERANCES (UNLESS SPECIFIED) <table border="1"> <tr> <td></td> <td>MM</td> <td>INCH</td> </tr> <tr> <td>4 PLACES</td> <td>±</td> <td>±</td> </tr> <tr> <td>3 PLACES</td> <td>±</td> <td>± 0.005</td> </tr> <tr> <td>2 PLACES</td> <td>± 0.13</td> <td>± 0.01</td> </tr> <tr> <td>1 PLACE</td> <td>± 0.25</td> <td>±</td> </tr> <tr> <td>0 PLACES</td> <td>±</td> <td>±</td> </tr> </table>					MM	INCH	4 PLACES	±	±	3 PLACES	±	± 0.005	2 PLACES	± 0.13	± 0.01	1 PLACE	± 0.25	±	0 PLACES	±
	MM	INCH																			
4 PLACES	±	±																			
3 PLACES	±	± 0.005																			
2 PLACES	± 0.13	± 0.01																			
1 PLACE	± 0.25	±																			
0 PLACES	±	±																			
DRAFT WHERE APPLICABLE MUST REMAIN WITHIN DIMENSIONS		MATERIAL NUMBER: SEE TABLE CUSTOMER:		SHEET NUMBER: 1 OF 1																	