

# Engineering Development Model

## Band Pass Filter

## CBPF-EDU1104

### Surface Mount

#### Important Note

This model has been designed, built and tested in our engineering department. Performance data represents model capability. At present it is a non-catalog model. On request, we can supply a final specification sheet, part number and price/delivery information.

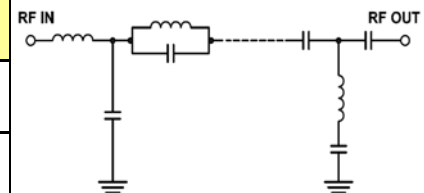


Please click "Back", and then click "Contact Us" for Applications support.

CASE STYLE : HQ1157

ELECTRICAL SPECIFICATIONS 50Ω @ +25°C				
Parameter	Min.	Typ.	Max.	Units
Passband (Loss < 2 dB)	1250		1850	MHz
Center frequency		1550		MHz
Group Delay variation @ 1250MHz-1850MHz			0.6	nSec
Low band (Loss > 25dB Typ)	10		910	MHz
Low band (Loss > 25dB Typ)	2500		6000	MHz
Passband VSWR		1.6	2	(:1)
Stopband VSWR		18		(:1)

MAXIMUM RATINGS	
Operating Temperature	-40°C to 85°C
Storage Temperature	-55°C to 100°C
RF Power Input	+25 dBm



PIN CONNECTIONS	
Input	1
Output	8
Case Ground	2,3,4,5,6,7,9,10,11,12,13,14