

Power Splitter/Combiner

ZA4PD-4+

4 Way-0° 50Ω 2000 to 4200 MHz



Generic photo used for illustration purposes only

CASE STYLE: DD52

Connectors	Model
SMA	ZA4PD-4-S+
N-TYPE	ZA4PD-4-N+

+RoHS Compliant

The +Suffix identifies RoHS Compliance. See our web site for RoHS Compliance methodologies and qualifications

Maximum Ratings

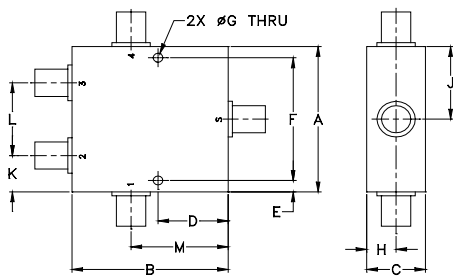
Operating Temperature	-55°C to 100°C
Storage Temperature	-55°C to 100°C
Power Input (as a splitter)	10W max.
Internal Dissipation	0.375W max.
DC Current	1.6 A (400mA for each port)

Permanent damage may occur if any of these limits are exceeded.

Coaxial Connections

SUM PORT	S
PORT 1	1
PORT 2	2
PORT 3	3
PORT 4	4

Outline Drawing



Outline Dimensions (inch mm)

A	B	C	D	E	F	G
2.00	2.00	.75	.90	.156	1.688	.125
50.80	50.80	19.05	22.86	3.96	42.88	3.18
H	J	K	L	M		wt
.38	1.00	.50	1.00	1.25		grams
9.65	25.40	12.70	25.40	31.75		150.00

Features

- wideband, 2000 to 4200 MHz
- good isolation, 25 dB typ.
- up to 10W power input as splitter

Applications

- MMDS
- wireless communication

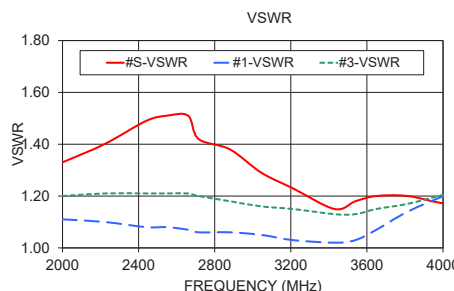
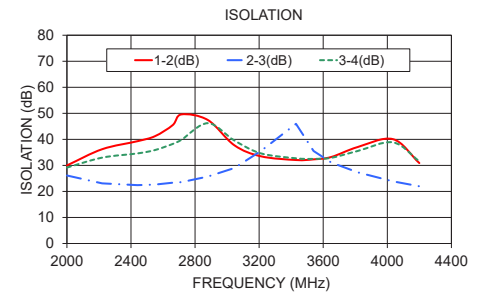
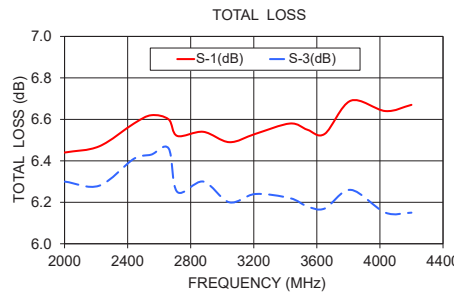
Electrical Specifications

FREQ. RANGE (MHz)	ISOLATION (dB)		INSERTION LOSS (dB) ABOVE 6.0 dB		PHASE UNBALANCE (Degrees)	AMPLITUDE UNBALANCE (dB)
	Typ.	Min.	Typ.	Max.	Max.	Max.
$f_c - f_u$						
2000-4200	25	16	0.5	1.0	16	0.8

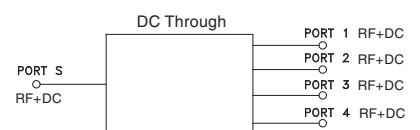
Typical Performance Data

Freq. (MHz)	Total Loss ¹ (dB)				Amp. Unbal. (dB)	Isolation (dB)			Phase Unbal. (deg.)	VSWR S	VSWR 1	VSWR 2	VSWR 3	VSWR 4
	S-1	S-2	S-3	S-4		1-2	2-3	3-4						
2000.00	6.44	6.28	6.30	6.44	0.16	29.99	26.13	29.17	1.49	1.33	1.11	1.20	1.20	1.10
2220.00	6.47	6.24	6.28	6.48	0.24	36.22	23.10	32.98	1.58	1.40	1.10	1.21	1.21	1.10
2440.00	6.58	6.37	6.41	6.59	0.22	39.29	22.41	34.60	1.59	1.49	1.08	1.23	1.21	1.10
2550.00	6.62	6.40	6.43	6.63	0.23	41.23	22.65	35.90	2.05	1.51	1.08	1.24	1.21	1.09
2660.00	6.60	6.44	6.46	6.61	0.17	45.46	23.35	38.23	1.96	1.51	1.07	1.23	1.21	1.09
2715.00	6.52	6.21	6.25	6.53	0.32	49.59	23.57	39.84	1.65	1.42	1.06	1.23	1.20	1.09
2880.00	6.54	6.26	6.30	6.55	0.29	47.42	25.73	46.22	1.96	1.38	1.06	1.21	1.18	1.08
3045.00	6.49	6.16	6.20	6.50	0.34	37.74	28.98	39.58	2.02	1.29	1.05	1.19	1.16	1.08
3210.00	6.53	6.19	6.24	6.54	0.35	33.51	35.51	34.63	2.21	1.23	1.03	1.18	1.15	1.06
3430.00	6.58	6.21	6.22	6.55	0.38	32.07	45.95	32.73	2.11	1.15	1.02	1.17	1.13	1.03
3540.00	6.55	6.14	6.18	6.55	0.42	32.32	35.52	32.51	2.49	1.18	1.03	1.17	1.13	1.00
3650.00	6.53	6.12	6.17	6.54	0.42	33.22	31.12	32.91	2.64	1.20	1.07	1.18	1.15	1.04
3815.00	6.69	6.22	6.26	6.67	0.47	37.05	27.33	35.53	2.77	1.20	1.14	1.20	1.17	1.10
4035.00	6.64	6.12	6.15	6.65	0.53	40.08	23.88	38.84	3.02	1.17	1.21	1.23	1.21	1.17
4200.00	6.67	6.10	6.15	6.68	0.58	30.89	21.99	31.59	3.20	1.20	1.26	1.24	1.23	1.24

1. Total Loss = Insertion Loss + 6dB splitter loss.



electrical schematic



Notes

- Performance and quality attributes and conditions not expressly stated in this specification document are intended to be excluded and do not form a part of this specification document.
- Electrical specifications and performance data contained in this specification document are based on Mini-Circuit's applicable established test performance criteria and measurement instructions.
- The parts covered by this specification document are subject to Mini-Circuit's standard limited warranty and terms and conditions (collectively, "Standard Terms"); Purchasers of this part are entitled to the rights and benefits contained therein. For a full statement of the Standard Terms and the exclusive rights and remedies thereunder, please visit Mini-Circuit's website at www.minicircuits.com/WCLStore/terms.jsp

