

Dimensioned drawing

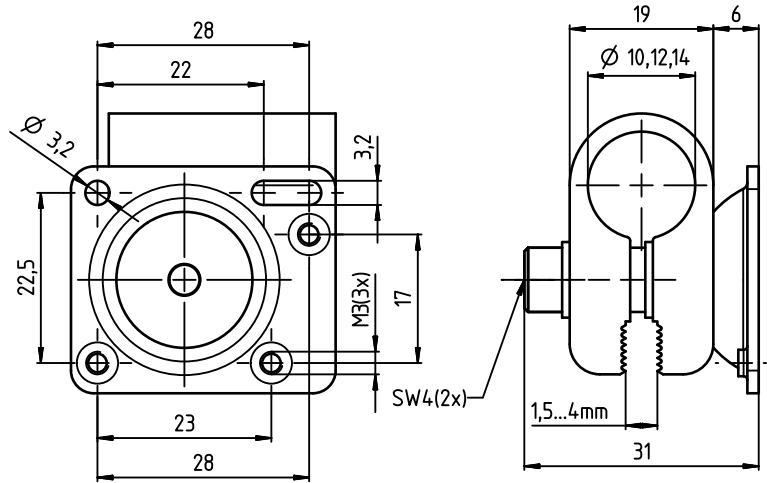
en 02-2014/08 50117995



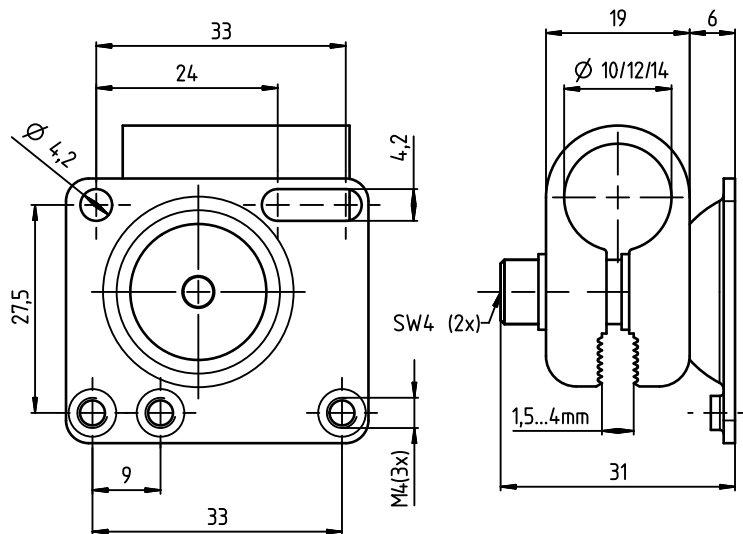
- Universal sensor rod mounting \varnothing 10mm, \varnothing 12mm or \varnothing 14mm
- Precise sensor alignment via 2-stage mounting
- Alignment on all 3 levels
- Compact design
- Stable metal design
- Fast installation via pre-mounted unit

We reserve the right to make changes • DS_AccessoryBTU_en_50117995.fm

BTU 200M...



BTU 300M...



Tightening torque:

- Screw terminals M5 < 2.8Nm !**
- Sensor fastening M4 < 1.4Nm !**
- Sensor fastening M3 < 0.9Nm !**

Specifications

General Specifications

	BTU 200M...	BTU 300M...
Rod mounting	Ø 10mm Ø 12mm Ø 14mm	Ø 10mm Ø 12mm Ø 14mm
Suitable for sensors	3B Series 5 Series 18 Series 25B Series 28 Series 55 Series	8 Series 9 Series 46B Series

Mechanical data

Material	Clamp: aluminum diecast Sensor holder: zinc-plated steel
Tightening torque ¹⁾	Screw terminals M5 (SW 4): max. 2.8Nm Sensor fastening M4 (SW 3): max. 1.4Nm Sensor fastening M3 (SW 2.5): max. 0.9Nm

1) Screw mounted with washer

Mounting

1. Select mounting location on the rod and clamp mounting device.
2. Align sensor exactly and fasten.

Order guide

Sensor series	Rod	Designation	Part No.
3B, 5, 18, 25B, 28, 55	Ø 10mm	BTU 200M-D10	50117256
	Ø 12mm	BTU 200M-D12	50117255
	Ø 14mm	BTU 200M-D14	50117254
8, 9, 46B	Ø 10mm	BTU 300M-D10	50117253
	Ø 12mm	BTU 300M-D12	50117252
	Ø 14mm	BTU 300M-D14	50117251

Remarks

Operate in accordance with intended use!

- ↪ The product may only be put into operation by competent persons.
- ↪ Only use the product in accordance with the intended use.