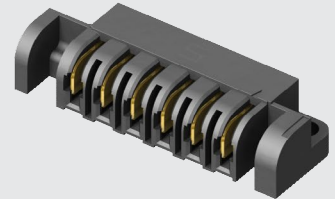


FMPT-06-01-L-S-V



FMPS-06-01-L-S-RA-SD

(5.00 mm) .1969"

FMPS, FMPT SERIES

"HINGING" 30 A POWER HEADER & SOCKET

SPECIFICATIONS

For complete specifications see www.samtec.com?FMPS or www.samtec.com?FMPT

Insulator Material:

Black LCP

Terminal Material:

Copper Alloy

Plating: Sn or Au over 50 μ" (1.27 μm) Ni

Operating Temp Range: -55 °C to +105 °C with Tin; -55 °C to +125 °C with Gold

Voltage Rating:

525 VAC/742 VDC

Standard Creepage:

FMPS: (3.67 mm) .144"

FMPT: (6.53 mm) .257"

Standard Clearance:

(2.71 mm) .106"

RoHS Compliant: Yes

Lead-Free Solderable: Yes

FMPT/FMPS	
PINS	CURRENT RATING (PER CONTACT)
1	26.7 A
2	22.9 A
3	19.1 A
4	17.6 A
8	15.8 A

-L PLATING

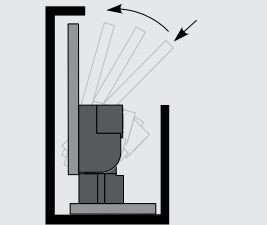
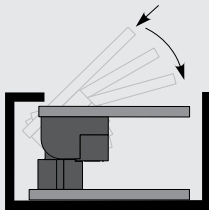
RECOGNITIONS

For complete scope of recognitions see www.samtec.com/quality



FILE NO. E111594

APPLICATION



Ideal for blind mating applications.

Note: Some sizes, styles and options are non-standard, non-returnable.

FMPS
NO. OF POSITIONS
01
PLATING OPTION
S
RA
OPTION

02, 04, 06, 08
(Standard sizes)

-L
= 10 μ" (0.25 μm) Gold on contact,
Matte Tin on tail

-T
= Matte Tin

-SD
= Screw Down
(Not Available with -LC)

-LC
= Locking Clip
(Manual placement required)
(Not Available with -SD)

NUMBER OF POSITIONS	A	B	C
-02	(22.63) .891	(16.28) .641	(15.63) .615
-04	(32.63) 1.285	(26.28) 1.035	(25.63) 1.009
-06	(42.63) 1.678	(36.28) 1.428	(35.63) 1.403
-08	(52.63) 2.072	(46.28) 1.822	(45.63) 1.796

-SD OPTION
(6 POSITIONS SHOWN)

-LC OPTION
(2 POSITIONS SHOWN)

ALSO AVAILABLE
(MOQ Required)

- Other sizes

CREEPAGE AND CLEARANCE

Selectively loading contacts achieves customer specific creepage and clearance requirements.
Contact asp@samtec.com

FMPT
NO. OF POSITIONS
01
PLATING OPTION
S
V
OPTION

02, 04, 06, 08
(Standard sizes)

-L
= 10 μ" (0.25 μm) Gold on contact,
Matte Tin on tail

-T
= Matte Tin

-LC
= Locking Clip
(Manual placement required)

NUMBER OF POSITIONS	A	B
-02	(22.63) .891	(16.53) .651
-04	(32.63) 1.285	(26.53) 1.044
-06	(42.63) 1.678	(36.53) 1.438
-08	(52.63) 2.072	(46.53) 1.832

-LC