

# EcoTec

CABLE GLANDS

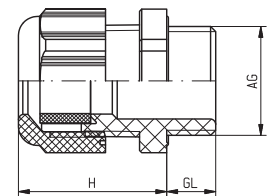


## CABLE GLANDS

### EcoTec-PA



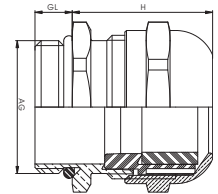
Material	PA
Seal	Buna-N
Protection	IP 68 – 5 bar (NEMA 6 – 150 PSIG) with additional O-Ring
Operating Temperature	-40 °C – 100 °C (-40 °F – 212 °F) (static) -20 °C – 80 °C (-4 °F – 176 °F) (dynamic)
Colors	grey (RAL 7035), black (RAL 9005) (other colours on request)



AG	$\varnothing$ mm	GL mm	H mm		Number grey	Number black
M 12 x 1,5	3 – 6,5	8	21	15	LCM12G	LCM12B
M 16 x 1,5	4 – 8	8	22	19	LCM16G	LCM16B
M 16 x 1,5	5 – 10	8	25	22	LCM16GE	LCM16BE
M 20 x 1,5	6 – 12	9	27	24	LCM20G	LCM20B
M 20 x 1,5	10 – 14	10	28,5	27	LCM20GE	LCM20BE
M 25 x 1,5	13 – 18	11	31,5	33	LCM25G	LCM25B
M 32 x 1,5	18 – 25	11	40	42	LCM32G	LCM32B
M 40 x 1,5	22 – 32	13	48	53	LCM40G	LCM40B
M 50 x 1,5	32 – 38	13	49	60	LCM50G	LCM50B
M 63 x 1,5	37 – 44	14	49	65	LCM63G	LCM63B
Pg 7	3 – 6,5	8	21	15	LCP07G	LCP07B
Pg 9	4 – 8	8	22	19	LCP09G	LCP09B
Pg11	5 – 10	8	25	22	LCP11G	LCP11B
Pg13,5	6 – 12	9	27	24	LCP13G	LCP13B
Pg16	10 – 14	10	28,5	27	LCP16G	LCP16B
Pg21	13 – 18	11	31,5	33	LCP21G	LCP21B
Pg29	18 – 25	11	40	42	LCP29G	LCP29B



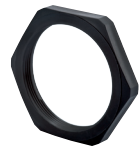
Material	Nickel plated brass
Clamping insert	Polyamide
Seal	NBR
O-Ring	Buna-N
Protection	IP 68 – 5 bar
Operating Temperature	-40 °C – 100 °C (-40 °F – 212 °F) (static) -20 °C – 80 °C (-4 °F – 176 °F) (dynamic)



AG	∅ mm	GL mm	H mm	∅ mm	Number	GL mm	Number elongated
M 12 x 1,5	3 – 6,5	6	18	14	MLCM12	10	MLCM12 L
M 16 x 1,5	4,5 – 10	6	22	19	MLCM16	10	MLCM16 L
M 20 x 1,5	6 – 12	6	23,5	22	MLCM2013	10	MLCM2013 L
M 20 x 1,5	7,5 – 14	6	24,5	24	MLCM20	10	MLCM20 L
M 25 x 1,5	9 – 17	7	26,5	29	MLCM25	12	MLCM25 L
M 32 x 1,5	11 – 21	8	34	34	MLCM32	12	MLCM32 L
M 40 x 1,5	19 – 28	8	36,5	44	MLCM40	15	MLCM40 L
M 50 x 1,5	27 – 35	9	45	55	MLCM50	15	MLCM50 L
M 63 x 1,5	34 – 48	10	48	68	MLCM63	15	MLCM63 L

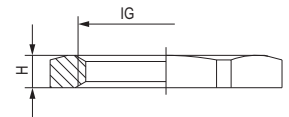
### Locknut GM-FS


Metr., PG, NPT



Material	Polyamide
Operating Temperature	-40 °C – 100 °C (-40 °F – 212 °F)
Colors	grey (RAL 7035), black (RAL 9005)

// Other colors on request



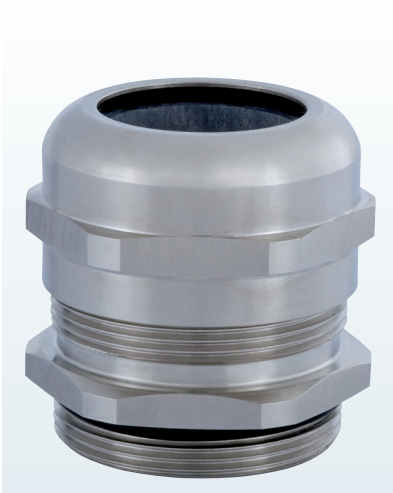
IG	H mm	 mm	Number PA grey	Number PA black
M 12 x 1,5	5	17	1.261.1200.50	1.261.1201.50
M 16 x 1,5	5	22	1.261.1600.50	1.261.1601.50
M 20 x 1,5	6	27	1.261.2000.50	1.261.2001.50
M 25 x 1,5	6,5	32	1.261.2500.50	1.261.2501.50
M 32 x 1,5	7	41	1.261.3200.50	1.261.3201.50
M 40 x 1,5	7	50	1.261.4000.50	1.261.4001.50
M 50 x 1,5	8	60	1.261.5000.50	1.261.5001.50
M 63 x 1,5	8	75	1.261.6300.50	1.261.6301.50
PG 7	5	19	1.261.0700.10	1.261.0701.10
PG 9	5	22	1.261.0900.10	1.261.0901.10
PG 11	5	24	1.261.1100.10	1.261.1101.10
PG 13,5	6	27	1.261.1300.10	1.261.1301.10
PG 16	6	30	1.261.1600.10	1.261.1601.10
PG 21	7	36	1.261.2100.10	1.261.2101.10
PG 29	7	46	1.261.2900.10	1.261.2901.10



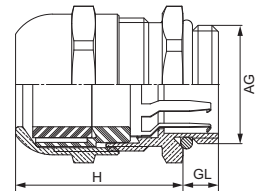
## CABLE GLANDS


EcoTec-MS-EMC

Metr.



Material	Nickel plated brass
Clamping insert	Polyamide
Seal	Buna-N
O-Ring	Buna-N
Protection	IP 68 – 5 bar
Operating Temperature	-40 °C – 100 °C (-40 °F – 212 °F)



AG	$\varnothing$ mm	GL mm	H mm	 mm	Number
M 12 x 1,5	3–6,5	6	19,4	14	MLCM12EMV
M 16 x 1,5	4,5–10	6	24,4	19	MLCM16EMV
M 20 x 1,5	6–12	6	25,4	22	MLCM2013EMV
M 20 x 1,5	7,5–14	6	28,3	24	MLCM20EMV
M 25 x 1,5	9–17	7	29,3	29	MLCM25EMV
M 32 x 1,5	11–21	8	37,7	34	MLCM32EMV
M 40 x 1,5	19–28	8	40,7	44	MLCM40EMV
M 50 x 1,5	27–35	9	50,7	55	MLCM50EMV
M 63 x 1,5	34–48	10	55,7	68	MLCM63EMV

