



**Part Number :** [39012021](#)

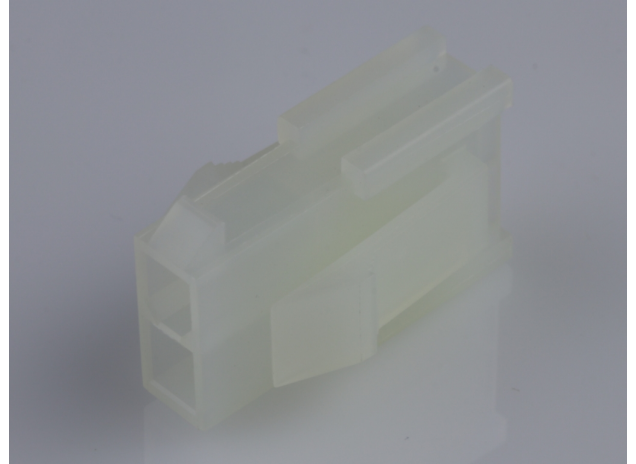
**Product Description :** Mini-Fit Jr. Plug Housing, Dual Row, 2 Circuits, UL 94V-2, with Panel Mounting Ears, Natural

**Series Number :** 5559

**Status :** Active

**Product Category :** Connector Housings

**Engineering Number :** 5559-02P



---

## Documents & Resources

### Drawings

[Drawing 039012021\\_sd.pdf](#)

### 3D Models and Design Files

[3D Model 039012021\\_stp.zip](#)

### Specifications

[Application Specification 55560001-AS-000.pdf](#)

[Application Specification AS-5557-001-001.pdf](#)

[Packaging Specification PK-5559-001-001.pdf](#)

[Product Specification PS-45750-001-001.pdf](#)


[Product Specification PS-5556-001-001.pdf](#)

[Test Summary 55560010-TS-000.pdf](#)

---

## Product Environment Compliance

### Compliance

GADSL/IMDS	Not Relevant
China RoHS	
EU ELV	Not Relevant
Low-Halogen Status	Low-Halogen per IEC 61249-2-21
REACH SVHC	Not Contained per D(2023)3788-DC (14 Jun 2023)
EU RoHS	Compliant per EU 2015/863

[Multiple Part Product Compliance Statements](#)

- Eu RoHS
- REACH SVHC
- Low-Halogen

#### Multiple Part Industry Compliance Documents

- IPC 1752A Class C
- IPC 1752A Class D
- Molex Product Compliance Declaration
- IEC-62474
- chemSHERPA (xml)

#### EU RoHS Certificate of Compliance

---

### Part Details

#### General

Status	Active
Category	Connector Housings
Series	5559
Description	Mini-Fit Jr. Plug Housing, Dual Row, 2 Circuits, UL 94V-2, with Panel Mounting Ears, Natural
Application	Power, Wire-to-Board, Wire-to-Wire
Comments	Current = 13A max. per circuit when header is mated to a receptacle loaded with 45750 series terminals crimped to 16 AWG wire. See Molex product specification PS-45750-001 for additional current derating information.
Product Family	Mini-Fit Family Power Connectors
Product Name	Mini-Fit Jr.
UPC	800753584266

#### Agency

CSA	LR19980
UL	E29179

#### Physical

Breakaway	No
Circuits (maximum)	2

Color - Resin	Natural
Flammability	94V-2
Gender	Plug
Glow-Wire Capable	No
Material - Resin	Nylon
Net Weight	1.237/g
Number of Rows	2
Packaging Type	Bag
Panel Mount	Yes
Pitch - Mating Interface	4.20mm
Pitch - Termination Interface	4.20mm
Polarized to Mating Part	Yes
Stackable	No
Temperature Range - Operating	-40° to +105°C

---

## Mates With / Use With

### Mates with Part(s)

Description	Part Number
Mini-Fit Jr. Receptacle Housings	<u><a href="#">5557</a></u>
Mini-Fit TPA2-to-Mini-Fit TPA2 Off-the-Shelf (OTS) Cable Assemblies	<u><a href="#">45135</a></u>
Mini-Fit Jr.-to-Mini-Fit Jr. Off-the-Shelf (OTS) Overmolded Cable Assemblies	<u><a href="#">245135</a></u>

### Use with Part(s)

Description	Part Number
Pre-Crimped Lead Mini-Fit Male-to-Mini-Fit Male, Tin (Sn) Plating, 150.00mm Length, 18 AWG, Red	<u><a href="/content/molex/molex-dot-com/us/en/products/product-page.html/797580005.html">/content/molex/molex-dot-com/us/en/products/product-page.html/797580005.html</a></u>
Pre-Crimped Lead Mini-Fit Male-to-Mini-Fit Male, Tin (Sn) Plating, 300.00mm Length, 18 AWG, Red	<u><a href="/content/molex/molex-dot-com/us/en/products/product-page.html/797580013.html">/content/molex/molex-dot-com/us/en/products/product-page.html/797580013.html</a></u>
Mini-Fit Male Crimp Terminals	<u><a href="#">5558</a></u>
Mini-Fit Plus Male Crimp Terminals	<u><a href="#">46012</a></u>

Mini-Fit Jr. Crimp Grounding Terminals	<u>30490</u>
---	--------------

---

---

This document was generated on Feb 06, 2024