

Coaxial High Pass Filter

NHP-700+ NHP-700

50Ω 700 to 3000 MHz

Maximum Ratings

Operating Temperature	-55°C to 100°C
Storage Temperature	-55°C to 100°C
RF Power Input	0.5W max.

Permanent damage may occur if any of these limits are exceeded.



CASE STYLE: FF57
Connectors Model
N-Type NHP-700(+)

+RoHS Compliant

The +Suffix identifies RoHS Compliance. See our web site for RoHS Compliance methodologies and qualifications

Features

- rugged shielded case
- other standard and custom NHP models available with wide selection of fco

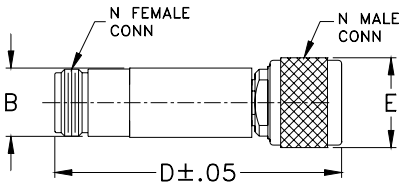
Applications

- lab use
- transmitters/receivers
- radio communications

High Pass Filter Electrical Specifications

STOPBAND (MHz)	fco (MHz) Nom.	PASSBAND (MHz)	VSWR (:1)
(loss > 40 dB)	(loss > 20 dB)	(loss < 1 dB)	Stopband Typ. Passband Typ.
DC-400	400-520	640	17- 1.6

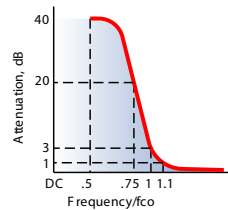
Outline Drawing



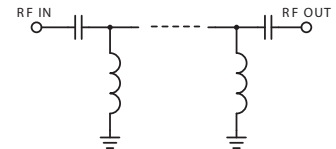
Outline Dimensions (inch/mm)

B	D	E	wt
.67	2.90	.82	grams
17.02	73.66	20.83	90.0

typical frequency response

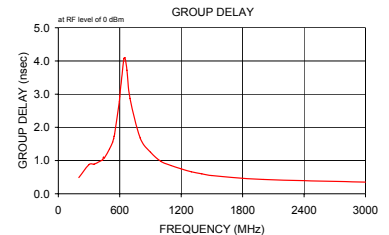
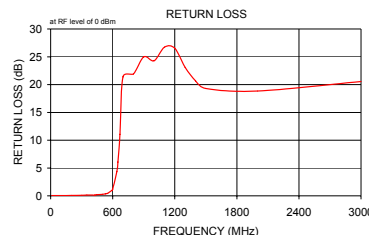
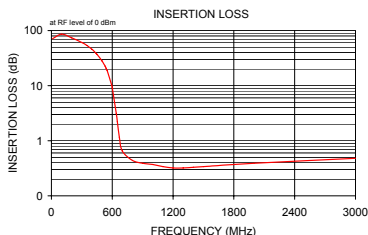


electrical schematic



Typical Performance Data

Frequency (MHz)	Insertion Loss (dB)	Return Loss (dB)	Frequency (MHz)	Group Delay (nsec)
	\bar{x}	σ		
10.00	71.13	3.73	200.00	0.49
100.00	86.10	2.60	300.00	0.88
200.00	73.72	0.25	350.00	0.89
300.00	60.72	0.42	400.00	0.97
350.00	53.62	0.27	425.00	1.01
400.00	45.60	0.35	433.00	1.02
425.00	41.41	0.44	441.00	1.10
441.00	38.65	0.51	450.00	1.08
450.00	37.09	0.54	500.00	1.35
500.00	28.11	0.74	530.00	1.55
530.00	22.58	0.88	535.00	1.61
540.00	20.70	0.93	540.00	1.66
545.00	19.75	0.96	545.00	1.73
550.00	18.80	0.98	550.00	1.80
595.00	10.16	1.20	595.00	2.77
600.00	9.24	1.21	600.00	2.92
640.00	3.13	0.83	640.00	4.07
650.00	2.21	0.63	650.00	4.10
670.00	1.15	0.28	670.00	3.72
700.00	0.65	0.04	700.00	2.87
800.00	0.44	0.01	800.00	1.68
900.00	0.39	0.02	900.00	1.25
1000.00	0.37	0.02	1000.00	0.98
1100.00	0.34	0.01	1100.00	0.85
1200.00	0.32	0.01	1200.00	0.75
1300.00	0.32	0.01	1300.00	0.66
1400.00	0.33	0.02	1400.00	0.60
1500.00	0.34	0.02	1500.00	0.55
2000.00	0.39	0.02	2000.00	0.43
3000.00	0.48	0.02	3000.00	0.35



Notes

- Performance and quality attributes and conditions not expressly stated in this specification document are intended to be excluded and do not form a part of this specification document.
- Electrical specifications and performance data contained in this specification document are based on Mini-Circuit's applicable established test performance criteria and measurement instructions.
- The parts covered by this specification document are subject to Mini-Circuit's standard limited warranty and terms and conditions (collectively, "Standard Terms"); Purchasers of this part are entitled to the rights and benefits contained therein. For a full statement of the Standard Terms and the exclusive rights and remedies thereunder, please visit Mini-Circuit's website at www.minicircuits.com/MCLStore/terms.jsp



www.minicircuits.com P.O. Box 350166, Brooklyn, NY 11235-0003 (718) 934-4500 sales@minicircuits.com

REV. C
M151107
NHP-700
150917