

# Low Pass Filter

## NLP-1750+

50Ω DC to 1500 MHz



Generic photo used for illustration purposes only

CASE STYLE: FF57  
Connectors Model  
N-Type NLP-1750+

### Features

- Rugged shielded case
- Other NLP models available with wide selection of cut-off frequencies

### Electrical Specifications at 25°C

Parameter		F#	Frequency (MHz)	Min.	Typ.	Max.	Unit
Pass Band	Insertion Loss	DC-F1	DC - 1500	—	—	1.0	dB
	Freq. Cut-off	F2	1750	—	3	—	dB
	VSWR	DC-F1	DC - 1500	—	1.3	—	:1
Stop Band	Rejection Loss	F3-F4	2400 - 3000	20	—	—	dB
		F4-F5	3000 - 6000	40	—	—	dB

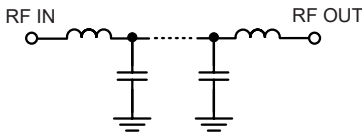
### Applications

- Lab use
- Test equipment
- Video equipment

Maximum Ratings <sup>2</sup>	
Operating Temperature	-55°C to 100°C
Storage Temperature	-55°C to 100°C
RF Power Input	0.5W max.

Permanent damage may occur if any of these limits are exceeded.

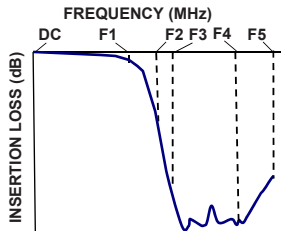
### Functional Schematic



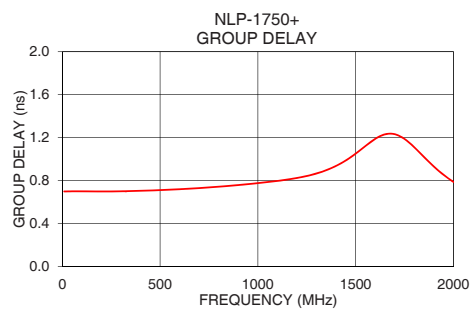
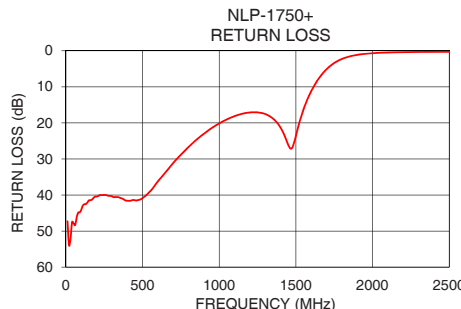
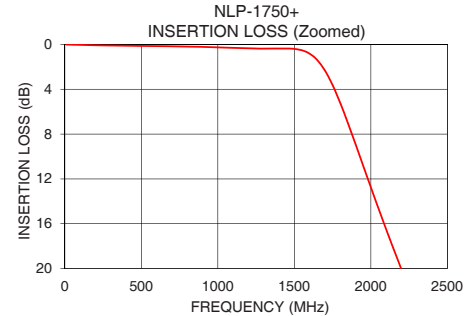
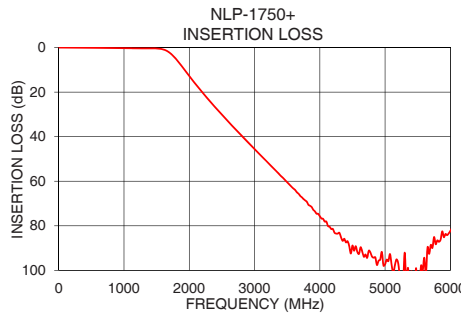
### Typical Performance Data at 25°C

Frequency (MHz)	Insertion Loss (dB)	Return Loss (dB)	Frequency (MHz)	Group Delay (nsec)
10	0.01	47.28	10	0.70
50	0.03	47.87	50	0.70
100	0.04	44.07	100	0.70
500	0.13	40.85	200	0.70
1000	0.26	20.12	300	0.70
1500	0.40	23.56	400	0.70
1600	0.83	11.19	500	0.71
1750	3.63	3.39	600	0.72
2000	12.75	0.67	700	0.73
2200	20.09	0.38	800	0.74
2400	26.88	0.31	900	0.76
2500	30.13	0.29	1000	0.78
3000	45.57	0.27	1100	0.80
3500	60.44	0.24	1150	0.81
3800	69.18	0.21	1200	0.82
4000	75.72	0.19	1250	0.84
4500	88.88	0.17	1300	0.87
5000	97.25	0.18	1350	0.90
5500	114.05	0.20	1400	0.94
6000	82.30	0.22	1500	1.05

### Typical Frequency Response



**+RoHS Compliant**  
The +Suffix identifies RoHS Compliance. See our web site for RoHS Compliance methodologies and qualifications



**Notes**

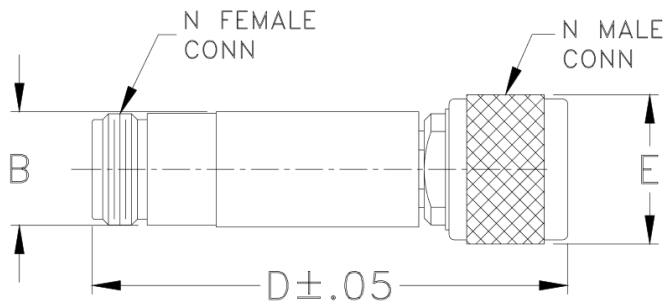
- Performance and quality attributes and conditions not expressly stated in this specification document are intended to be excluded and do not form a part of this specification document.
- Electrical specifications and performance data contained in this specification document are based on Mini-Circuit's applicable established test performance criteria and measurement instructions.
- The parts covered by this specification document are subject to Mini-Circuits standard limited warranty and terms and conditions (collectively, "Standard Terms"); Purchasers of this part are entitled to the rights and benefits contained therein. For a full statement of the Standard Terms and the exclusive rights and remedies thereunder, please visit Mini-Circuits' website at [www.minicircuits.com/MCLStore/terms.jsp](http://www.minicircuits.com/MCLStore/terms.jsp)



## Coaxial Connections

INPUT	N-Male
OUTPUT	N-Female

## Outline Drawing



## Outline Dimensions ( $\frac{\text{inch}}{\text{mm}}$ )

B	D	E	wt
.70	2.90	.82	grams
17.78	73.66	20.83	90.0

Note: Please refer to case style drawing for details

### Notes

- A. Performance and quality attributes and conditions not expressly stated in this specification document are intended to be excluded and do not form a part of this specification document.
- B. Electrical specifications and performance data contained in this specification document are based on Mini-Circuit's applicable established test performance criteria and measurement instructions.
- C. The parts covered by this specification document are subject to Mini-Circuits standard limited warranty and terms and conditions (collectively, "Standard Terms"); Purchasers of this part are entitled to the rights and benefits contained therein. For a full statement of the Standard Terms and the exclusive rights and remedies thereunder, please visit Mini-Circuits' website at [www.minicircuits.com/MCLStore/terms.jsp](http://www.minicircuits.com/MCLStore/terms.jsp)

