

Surface Mount Bandpass Filter

SXBP-707+

50Ω 650 to 770 MHz

Maximum Ratings

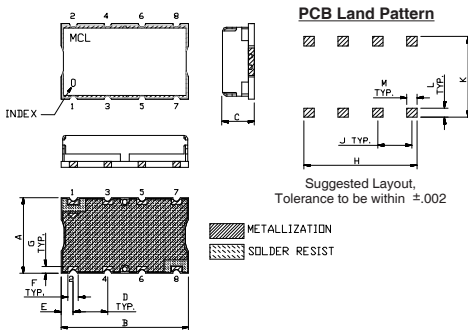
Operating Temperature	-40°C to 85°C
Storage Temperature	-55°C to 100°C
RF Power Input	0.5W Max.

Permanent damage may occur if any of these limits are exceeded.

Pin Connections

INPUT	1
OUTPUT	8
GROUND	2, 3, 4, 5, 6, 7

Outline Drawing

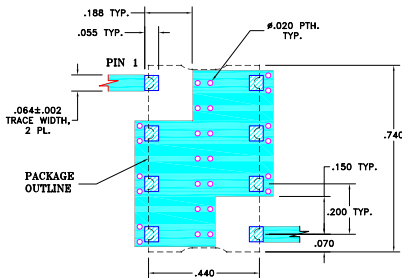


Outline Dimensions (inch/mm)

A	B	C	D	E	F	G	H	J	K	L	M	wt.
.44	.74	.27	.200	.07	.060	11.18	18.80	6.86	5.08	1.78	1.52	
						.040	.660	.200	.470	.055	.060	grams
						1.02	16.76	5.08	11.94	1.40	1.52	3.0

Note: Please refer to case style drawing for details

Demo Board MCL P/N: TB-368 Suggested PCB Layout (PL-230)

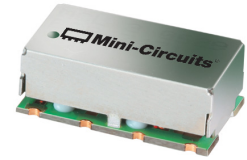


Features

- high rejection
- flat group delay @ passband
- shielded case
- aqueous washable

Applications

- mobile TV
- receivers / transmitters
- harmonic rejection



Generic photo used for illustration purposes only
CASE STYLE: HF1139

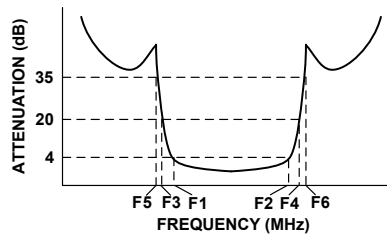
+RoHS Compliant

The +Suffix identifies RoHS Compliance. See our web site for RoHS Compliance methodologies and qualifications

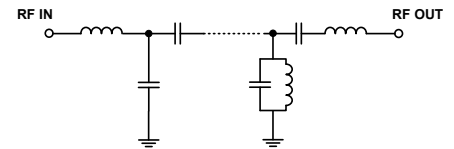
Bandpass Filter Electrical Specifications (T_{AMB} = 25°C)

CENTER FREQ. (MHz)	PASSBAND (MHz) (Loss < 4dB)	STOPBANDS (MHz)				VSWR (:1)		
		Loss > 20dB	Loss 35dB Typ.	Passband Typ.	Passband Max.	Stopband Typ.		
F _c	F ₁ - F ₂	F ₃	F ₄	F ₅	F ₆			
707	650 - 770	450	830	400	840 - 5000	1.7	2.3	20

Typical Frequency Response

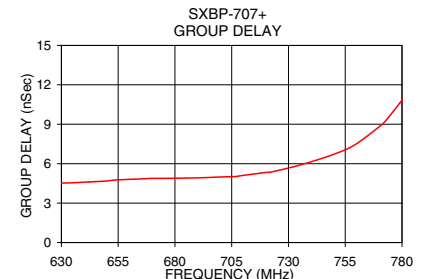
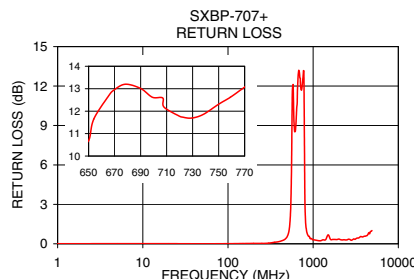
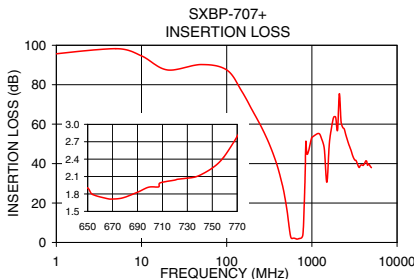


Functional Schematic



Typical Performance Data at 25°C

Frequency (MHz)	Insertion Loss (dB)		Return Loss (dB)	Frequency (MHz)	Group Delay (nSec)
	\bar{x}	σ			
5.0	98.28	6.06	0.01	630.0	4.53
400.0	37.67	0.20	0.11	642.0	4.61
450.0	29.25	0.23	0.17	650.0	4.69
510.0	16.37	0.33	0.57	654.0	4.76
534.0	9.91	0.38	1.05	666.0	4.85
546.0	6.56	0.37	1.65	678.0	4.89
558.0	3.78	0.26	2.95	690.0	4.92
650.0	1.90	0.05	10.37	699.0	4.98
678.0	1.73	0.04	12.92	707.0	5.03
707.0	1.92	0.04	12.62	712.0	5.15
750.0	2.25	0.05	11.85	720.0	5.33
770.0	2.79	0.07	12.62	729.0	5.63
791.0	5.83	0.50	10.55	738.0	6.04
803.0	12.11	1.15	4.50	750.0	6.72
830.0	30.85	1.90	1.20	759.0	7.41
840.0	43.64	3.04	0.95	770.0	8.81
1500.0	30.51	0.72	0.31	773.0	9.31
5000.0	37.93	0.75	1.01	779.0	10.61



Notes

- Performance and quality attributes and conditions not expressly stated in this specification document are intended to be excluded and do not form a part of this specification document.
- Electrical specifications and performance data contained in this specification document are based on Mini-Circuit's applicable established test performance criteria and measurement instructions.
- The parts covered by this specification document are subject to Mini-Circuits standard limited warranty and terms and conditions (collectively, "Standard Terms"); Purchasers of this part are entitled to the rights and benefits contained therein. For a full statement of the Standard Terms and the exclusive rights and remedies thereunder, please visit Mini-Circuits' website at www.minicircuits.com/MCLStore/terms.jsp



www.minicircuits.com P.O. Box 350166, Brooklyn, NY 11235-0003 (718) 934-4500 sales@minicircuits.com

REV. C
ECO-005139
EDR-9160/1UF1
SXBP-707+
URJ/RAV
201202
Page 1 of 1