

Engineering Development Model

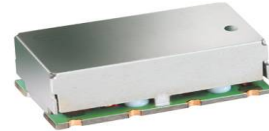
BandPass Filter

Surface Mount

SXBP-EDU1295+

Important Note

This model has been designed, built and tested in our engineering department. Performance data represents model capability. At present it is a non-catalog model. On request, we can supply a final specification sheet, part number and price/delivery information.



Please click "Back", and then click "Contact Us" for Applications support.

CASE STYLE : HF1139

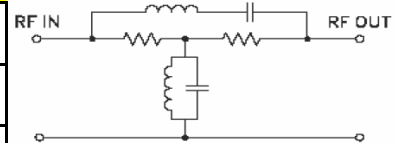
ELECTRICAL SPECIFICATIONS 50Ω @ +25°C

Parameter	Min.	Typ.	Max.	Units
Passband (Loss < 1 dB)	54		74	MHz
Centre frequency		64		MHz
Low Band (Loss > 20 dB)	DC		2.5	MHz
Low Band (Loss > 10 dB)	2.5		10	MHz
High Band (Loss > 10 dB)	360		700	MHz
High Band (Loss > 20 dB)	700		800	MHz
Passband VSWR		1.2		(:1)
Stopband VSWR		1.2		(:1)

Functional Schematic

MAXIMUM RATINGS

Operating Temperature	-40°C to 85°C
Storage Temperature	-55°C to 100°C
RF Power Input	0.2 W



PIN CONNECTIONS

Input	1
Output	8
Not Connected	-
Case Ground	2, 3, 4, 5, 6, 7