

Power Splitter/Combiner

8 Way-0° 50Ω 800 to 960 MHz

ZB8PD-1+



Maximum Ratings

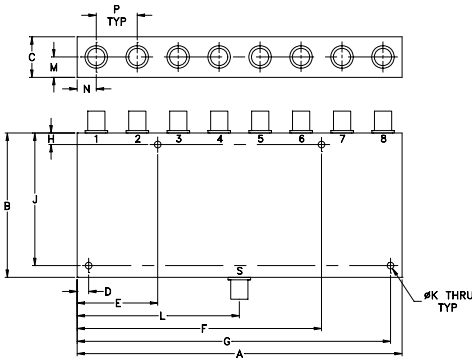
Operating Temperature	-55°C to 100°C
Storage Temperature	-55°C to 100°C
Power Input (as a splitter)	10W max.
Internal Dissipation	0.875W max.
DC Current	1.2A(150mA for each port)

Permanent damage may occur if any of these limits are exceeded.

Coaxial Connections

SUM PORT	S
PORT 1,2,3,4,5,6,7,8	1,2,3,4,5,6,7,8

Outline Drawing



Outline Dimensions (inch/mm)

A	B	C	D	E	F	G	H
7.06	3.13	.88	.250	1.750	5.310	6.810	.250
179.32	79.50	22.35	6.35	44.45	134.87	172.97	6.35

J	K	L	M	N	P	wt
2.875	.144	3.53	.44	.415	.89	grams
73.03	3.66	89.66	11.18	10.54	22.61	800

Features

- low insertion loss, 0.4 dB typ.
- high isolation, 30 dB typ.
- up to 10W power input as splitter
- rugged shielded case

Applications

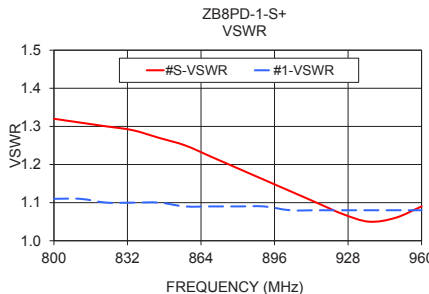
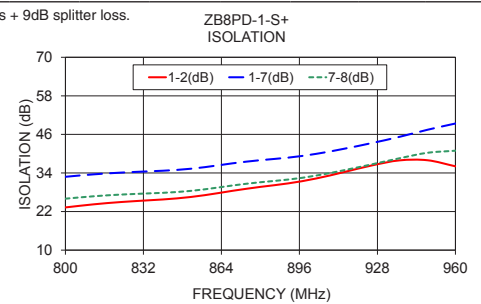
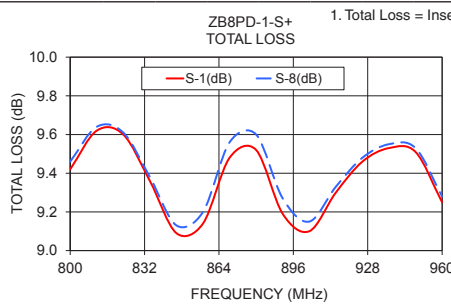
- cellular
- UHF
- instrumentation
- signal processing

Electrical Specifications

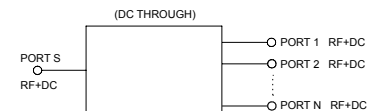
FREQ. RANGE (MHz)	ISOLATION (dB)		INSERTION LOSS (dB) ABOVE 9.0 dB		PHASE UNBALANCE (Degrees)	AMPLITUDE UNBALANCE (dB)	VSWR (:1)			
	Typ.	Min.	Typ.	Max.			S		OUT	
800-960	30	20	0.4	0.9	8.0	0.4	1.22	1.5	1.11	1.30

Typical Performance Data

Frequency (MHz)	Total Loss ¹ (dB)						Amplitude Unbalance (dB)	Isolation (dB)				VSWR S	VSWR 1	VSWR 8
	S-1	S-2	S-3	S-4	S-6	S-8		1-2	1-8	3-4	5-7			
800.00	9.40	9.43	9.42	9.47	9.47	9.38	0.11	29.13	34.18	28.87	27.16	1.23	1.13	1.12
806.40	9.41	9.42	9.42	9.46	9.46	9.39	0.10	29.67	34.86	29.25	27.52	1.22	1.13	1.12
819.20	9.39	9.39	9.38	9.43	9.42	9.36	0.09	30.71	36.58	30.01	28.48	1.22	1.13	1.12
832.00	9.34	9.35	9.34	9.39	9.40	9.32	0.12	32.11	38.46	31.05	29.82	1.25	1.12	1.12
844.80	9.35	9.37	9.37	9.42	9.43	9.35	0.12	34.07	39.84	32.32	31.39	1.29	1.12	1.11
857.60	9.39	9.40	9.40	9.43	9.44	9.36	0.11	35.35	40.11	32.88	32.88	1.30	1.12	1.11
870.40	9.42	9.43	9.43	9.46	9.46	9.37	0.12	33.92	39.87	31.72	34.03	1.28	1.13	1.12
883.20	9.38	9.43	9.43	9.47	9.47	9.36	0.14	31.52	40.29	29.94	34.94	1.23	1.13	1.13
896.00	9.35	9.36	9.37	9.41	9.41	9.31	0.15	29.87	42.18	28.61	36.17	1.18	1.13	1.13
902.40	9.34	9.35	9.36	9.40	9.40	9.30	0.15	29.38	44.02	28.17	37.15	1.16	1.13	1.13
915.20	9.34	9.34	9.35	9.40	9.40	9.30	0.15	28.69	52.54	27.65	40.29	1.17	1.12	1.12
928.00	9.36	9.36	9.37	9.41	9.43	9.32	0.13	27.78	53.18	26.93	44.41	1.21	1.12	1.12
940.80	9.35	9.37	9.39	9.43	9.43	9.33	0.13	26.25	44.01	25.67	43.59	1.23	1.12	1.12
953.60	9.36	9.38	9.39	9.43	9.44	9.34	0.12	24.57	40.69	24.15	40.55	1.26	1.13	1.14
960.00	9.39	9.41	9.42	9.46	9.46	9.37	0.13	23.86	39.99	23.47	39.66	1.28	1.13	1.14



electrical schematic



Notes

- Performance and quality attributes and conditions not expressly stated in this specification document are intended to be excluded and do not form a part of this specification document.
- Electrical specifications and performance data contained in this specification document are based on Mini-Circuit's applicable established test performance criteria and measurement instructions.
- The parts covered by this specification document are subject to Mini-Circuit's standard limited warranty and terms and conditions (collectively, "Standard Terms"); Purchasers of this part are entitled to the rights and benefits contained therein. For a full statement of the Standard Terms and the exclusive rights and remedies thereunder, please visit Mini-Circuit's website at www.minicircuits.com/WCLStore/terms.jsp

