

Power Splitter/Combiner

ZB8PD-22-75+

8 Way 75Ω 950 to 2200 MHz

Maximum Ratings

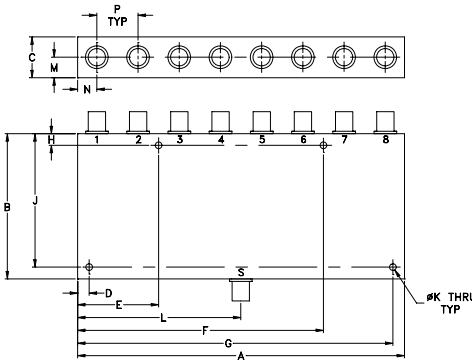
Operating Temperature	-55°C to 100°C
Storage Temperature	-55°C to 100°C
Power Input (as a splitter)	10W max.
Internal Dissipation	0.875W max.
DC Current	1.0A(125mA for each port)

Permanent damage may occur if any of these limits are exceeded.

Coaxial Connections

SUM PORT	S
PORT 1,2,3,4,5,6,7,8	1,2,3,4,5,6,7,8

Outline Drawing



Outline Dimensions (inch/mm)

A	B	C	D	E	F	G	H
7.06	3.13	.88	.250	1.750	5.310	6.810	.250
179.32	79.50	22.35	6.35	44.45	134.87	172.97	6.35

J	K	L	M	N	P	wt
2.875	.144	3.53	.44	.415	.89	grams
73.03	3.66	89.66	11.18	10.54	22.61	800

Features

- wideband, 950 to 2200 MHz
- low insertion loss 0.7 dB typ.
- good isolation, 24 dB typ.
- up to 10W power input as splitter
- rugged shielded case

Applications

- cellular
- CATV
- PCS/DCS
- instrumentation
- UMTS

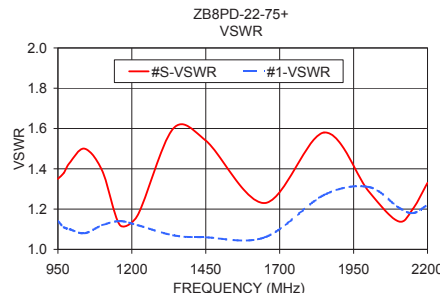
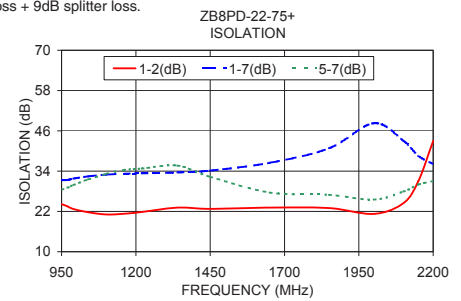
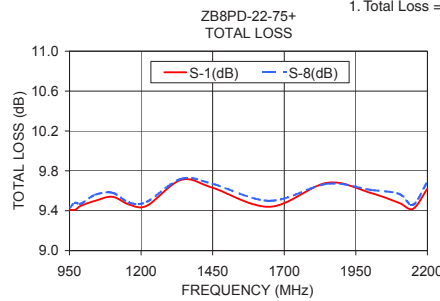
Electrical Specifications

FREQ. RANGE (MHz)	ISOLATION (dB)		INSERTION LOSS (dB) ABOVE 9.0 dB		AMPLITUDE UNBALANCE (dB)
	Typ.	Min.	Typ.	Max.	Max.
f_L - f_U					
950-2200	24	16	0.7	1.6	0.7

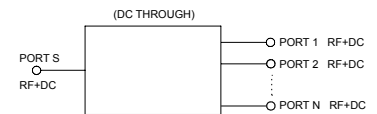
Typical Performance Data

Frequency (MHz)	Total Loss ¹ (dB)						Amplitude Unbalance (dB)	Isolation (dB)				VSWR S	VSWR 1	VSWR 8
	S-1	S-2	S-3	S-4	S-6	S-8		1-2	1-7	3-4	5-7			
950.00	9.41	9.44	9.50	9.44	9.51	9.43	0.10	24.17	31.28	24.18	28.46	1.35	1.14	1.10
970.00	9.41	9.46	9.51	9.50	9.52	9.48	0.12	23.51	31.37	23.67	29.07	1.38	1.11	1.07
990.00	9.45	9.49	9.56	9.47	9.54	9.47	0.15	22.72	31.78	23.24	29.87	1.43	1.10	1.06
1040.00	9.50	9.60	9.54	9.51	9.64	9.56	0.14	21.74	32.45	22.90	31.55	1.50	1.08	1.04
1100.00	9.54	9.57	9.54	9.52	9.56	9.58	0.14	21.10	32.95	23.49	33.17	1.39	1.12	1.06
1160.00	9.46	9.50	9.44	9.45	9.47	9.48	0.14	21.30	33.24	24.40	34.35	1.12	1.14	1.07
1220.00	9.45	9.46	9.49	9.46	9.47	9.49	0.10	21.84	33.32	24.96	34.76	1.17	1.12	1.08
1340.00	9.71	9.70	9.73	9.75	9.75	9.72	0.11	23.14	33.60	24.61	35.64	1.60	1.07	1.09
1450.00	9.63	9.67	9.74	9.76	9.73	9.67	0.17	22.76	34.17	24.78	32.32	1.54	1.06	1.10
1650.00	9.44	9.48	9.63	9.61	9.59	9.50	0.20	23.13	36.49	27.46	27.64	1.23	1.06	1.11
1850.00	9.68	9.74	9.97	9.97	9.99	9.67	0.31	22.99	40.80	28.80	26.93	1.58	1.27	1.20
2000.00	9.58	9.61	9.99	9.87	9.98	9.61	0.41	21.25	48.26	38.46	25.51	1.29	1.31	1.36
2100.00	9.48	9.53	9.81	9.80	9.86	9.57	0.37	24.48	43.03	24.02	27.90	1.14	1.21	1.29
2150.00	9.42	9.48	9.82	9.75	9.76	9.46	0.40	31.02	38.54	21.69	30.02	1.20	1.18	1.26
2200.00	9.62	9.64	10.02	9.94	9.92	9.69	0.40	42.97	36.12	20.98	31.06	1.33	1.22	1.32

1. Total Loss = Insertion Loss + 9dB splitter loss.



electrical schematic



Notes

- Performance and quality attributes and conditions not expressly stated in this specification document are intended to be excluded and do not form a part of this specification document.
- Electrical specifications and performance data contained in this specification document are based on Mini-Circuit's applicable established test performance criteria and measurement instructions.
- The parts covered by this specification document are subject to Mini-Circuit's standard limited warranty and terms and conditions (collectively, "Standard Terms"); Purchasers of this part are entitled to the rights and benefits contained therein. For a full statement of the Standard Terms and the exclusive rights and remedies thereunder, please visit Mini-Circuit's website at www.minicircuits.com/MCLStore/terms.jsp

