

6-1415035-1 ✓ ACTIVE

SCHRACK | SCHRACK Accessories PT/RT/XT

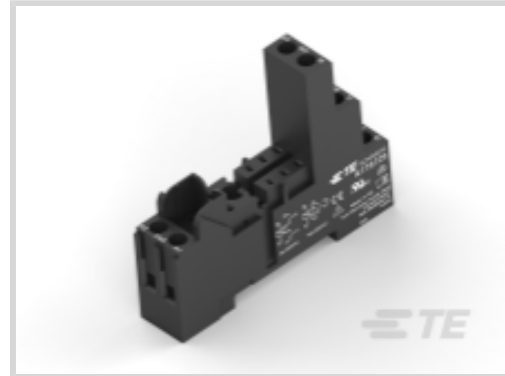
TE Internal #: 6-1415035-1

DIN Rail Mount, DIN Rail, 2, Socket, SCHRACK Accessories PT/RT/XT, Relay Accessories

[View on TE.com >](#)



Relays & Contactors > Relay Accessories



Relay Socket Type: **DIN Rail Mount**

Product Mount Type: **DIN Rail**

Pole Configuration: **2**

Relay Accessory Type: **Socket**

## Features

### Product Type Features

Relay Accessory Type	Socket
----------------------	--------

### Contact Features

Terminal Style	Screw
Relay Socket Type	DIN Rail Mount
Pole Configuration	2

### Termination Features

Number of Pins	8
	.6 in

### Mechanical Attachment

Product Mounting Feature Type	Snap-On
Product Mount Type	DIN Rail

## Product Compliance

[For compliance documentation, visit the product page on TE.com>](#)

EU RoHS Directive 2011/65/EU	Compliant
EU ELV Directive 2000/53/EC	Compliant
China RoHS 2 Directive MIIT Order No 32, 2016	No Restricted Materials Above Threshold
EU REACH Regulation (EC) No. 1907/2006	Current ECHA Candidate List: JUNE 2024 (241)



Candidate List Declared Against: JUNE 2024 (241)  
Does not contain REACH SVHC

Halogen Content	Low Halogen - Br, Cl, F, I < 900 ppm per homogenous material. Also BFR/CFR/PVC Free
Solder Process Capability	Not applicable for solder process capability

Product Compliance Disclaimer

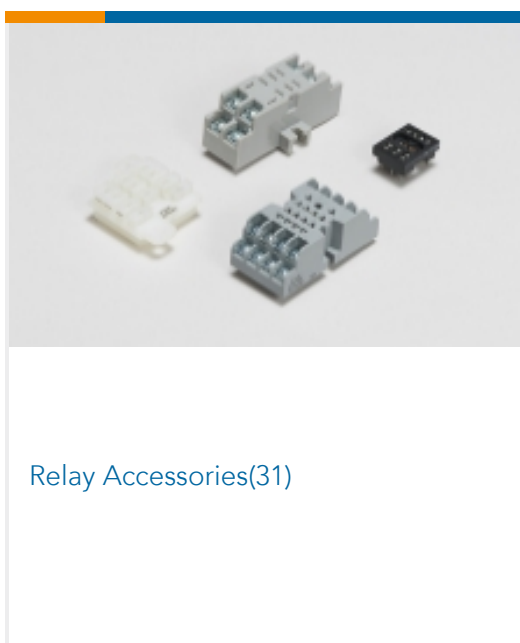
This information is provided based on reasonable inquiry of our suppliers and represents our current actual knowledge based on the information they provided. This information is subject to change. The part numbers that TE has identified as EU RoHS compliant have a maximum concentration of 0.1% by weight in homogenous materials for lead, hexavalent chromium, mercury, PBB, PBDE, DBP, BBP, DEHP, DIBP, and 0.01% for cadmium, or qualify for an exemption to these limits as defined in the Annexes of Directive 2011/65/EU (RoHS2). Finished electrical and electronic equipment products will be CE marked as required by Directive 2011/65/EU. Components may not be CE marked. Additionally, the part numbers that TE has identified as EU ELV compliant have a maximum concentration of 0.1% by weight in homogenous materials for lead, hexavalent chromium, and mercury, and 0.01% for cadmium, or qualify for an exemption to these limits as defined in the Annexes of Directive 2000/53/EC (ELV). Regarding the REACH Regulation, the information TE provides on SVHC in articles for this part number is based on the latest European Chemicals Agency (ECHA) 'Guidance on requirements for substances in articles' posted at this URL: <https://echa.europa.eu/guidance-documents/guidance-on-reach>

## Compatible Parts

 <p>TE Part # CAT-SCH691-R997 PCB Power Relay: 12-16 Amp, Monostable</p>	 <p>TE Part # 5-1415539-3 PTML0060</p>	 <p>TE Part # 7-1415036-1 PTML0730</p>	 <p>TE Part # 1-1419108-1 RT315730</p>
 <p>TE Part # 7-1393243-8 RT424615</p>	 <p>TE Part # 7-1393243-6 RT424524</p>	 <p>TE Part # 1-1393240-4 RT315024</p>	 <p>TE Part # 5-1415036-1 PTML0024</p>



Also in the Series | **SCHRACK Accessories PT/RT/XT**



Customers Also Bought





## Documents

### CAD Files

#### Customer View Model

[ENG\\_CVM\\_CVM\\_6-1415035-1\\_A.2d\\_dxf.zip](#)

English

#### 3D PDF

3D

#### Customer View Model

[ENG\\_CVM\\_CVM\\_6-1415035-1\\_A.3d\\_igs.zip](#)

English

#### Customer View Model

[ENG\\_CVM\\_CVM\\_6-1415035-1\\_A.3d\\_stp.zip](#)

English

By downloading the CAD file I accept and agree to the [Terms and Conditions](#) of use.

### Datasheets & Catalog Pages

#### Accessories - Power Relay XT

English

#### Accessories Force Guided Relay SR2M Plug-in

English

#### Relay Package Package RT

English

#### Accessories - Power PCB Relay RT

English

### Product Specifications

#### Definitions General Purpose Relays

English



---

**Agency Approvals**

UKCA\_CERT\_708\_00013\_C1

English