

# Frequency Mixer

## LRMS-2+

Level 7 (LO Power +7dBm) 5 to 1000 MHz



CASE STYLE: QQQ130

**+RoHS Compliant**  
The +Suffix identifies RoHS Compliance. See our web site for RoHS Compliance methodologies and qualifications

### Maximum Ratings

Operating Temperature	-40°C to 85°C
Storage Temperature	-55°C to 100°C
RF Power	50mW
IF Current	40mA
Permanent damage may occur if any of these limits are exceeded.	

### Pin Connections

LO	1
RF	4
IF	5
GROUND	2,3,6

### Features

- low conversion loss, 6.67 dB typ.
- excellent L-R isolation, 40 dB typ.

### Applications

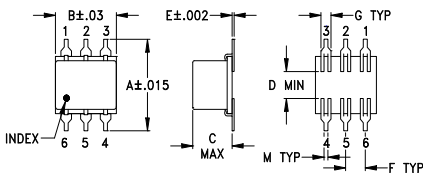
- VHF/UHF
- instrumentation
- cellular

### Electrical Specifications

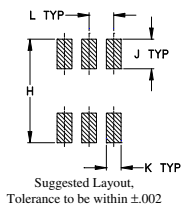
FREQUENCY (MHz)	CONVERSION LOSS (dB)	LO-RF ISOLATION (dB)			LO-IF ISOLATION (dB)			IP3 at center band (dBm)										
		L	M	U	L	M	U											
5-1000	DC-1000	6.67	.26	8.0	9.5	60	40	40	20	25	18	55	30	30	20	20	12	16

1 dB COMP.: +1 dBm typ.  
 L = low range [ $f_L$  to  $10 f_L$ ]      M = mid range [ $10 f_L$  to  $f_U/2$ ]      U = upper range [ $f_U/2$  to  $f_U$ ]  
 $\bar{X}$  = Mid-Band       $\sigma$  = Total Range Max.

### Outline Drawing



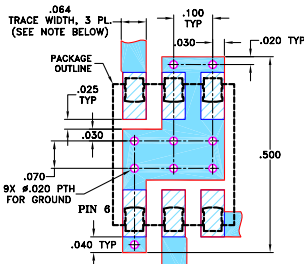
### PCB Land Pattern



### Outline Dimensions (inch/mm)

A	B	C	D	E	F	G	
.400	.31	.200	.10	.010	.100	.050	
10.16	7.87	5.08	2.54	0.25	2.54	1.27	
H	J	K	L	M		wt	
.420	.120	.060	.100	.020		grams	
10.67	3.05	1.52	2.54	0.51		0.55	

### Demo Board MCL P/N: TB-44+ Suggested PCB Layout (PL-083)



- NOTES: 1. TRACE WIDTH IS SHOWN FOR ROGERS R04350B WITH DIELECTRIC THICKNESS 0.030" ± 0.002"; COPPER: 1/2 OZ. EACH SIDE. FOR OTHER MATERIALS TRACE WIDTH MAY NEED TO BE MODIFIED.  
 2. BOTTOM SIDE OF THE PCB IS CONTINUOUS GROUND PLANE.  
 [Blue shaded area] DENOTES PCB COPPER LAYOUT WITH SMOBC (SOLDER MASK OVER BARE COPPER)  
 [Hatched area] DENOTES COPPER LAND PATTERN FREE OF SOLDER MASK

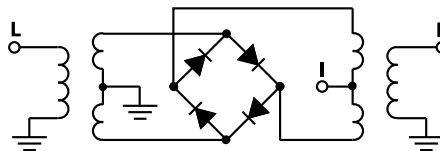
### Notes

- A. Performance and quality attributes and conditions not expressly stated in this specification document are intended to be excluded and do not form a part of this specification document.  
 B. Electrical specifications and performance data contained in this specification document are based on Mini-Circuit's applicable established test performance criteria and measurement instructions.  
 C. The parts covered by this specification document are subject to Mini-Circuits standard limited warranty and terms and conditions (collectively, "Standard Terms"); Purchasers of this part are entitled to the rights and benefits contained therein. For a full statement of the Standard Terms and the exclusive rights and remedies thereunder, please visit Mini-Circuits' website at [www.minicircuits.com/MCLStore/terms.jsp](http://www.minicircuits.com/MCLStore/terms.jsp)

### Typical Performance Data

Frequency (MHz)		Conversion Loss (dB)	Isolation L-R (dB)	Isolation L-I (dB)	VSWR RF Port (:1)	VSWR LO Port (:1)
RF	LO	LO +7dBm	LO +7dBm	LO +7dBm	LO +7dBm	LO +7dBm
5.00	35.00	7.10	54.80	61.28	1.65	2.68
10.00	40.00	6.75	53.66	60.10	1.39	2.70
34.00	64.00	6.65	49.48	56.02	1.28	2.69
42.00	72.00	6.71	48.42	54.85	1.29	2.68
50.00	80.00	6.65	47.48	53.84	1.30	2.65
75.00	105.00	6.64	45.18	51.63	1.31	2.61
100.00	130.00	6.75	43.57	50.79	1.31	2.68
200.00	230.00	6.76	38.78	47.49	1.32	2.76
250.00	280.00	6.77	37.05	44.64	1.34	2.60
300.00	330.00	6.83	35.93	42.49	1.32	2.72
400.00	430.00	6.97	34.39	38.85	1.30	2.70
450.00	480.00	6.93	33.35	36.67	1.30	2.67
500.00	530.00	7.05	32.80	35.07	1.29	2.83
550.00	580.00	7.12	31.89	32.96	1.29	2.91
600.00	630.00	7.08	31.55	31.69	1.29	2.60
700.00	730.00	7.06	30.41	29.33	1.26	2.90
750.00	780.00	7.16	29.49	27.72	1.31	2.89
800.00	830.00	7.08	28.87	26.26	1.38	3.38
900.00	930.00	6.95	27.66	22.68	1.65	3.59
1000.00	1030.00	7.11	27.40	21.43	1.80	3.96

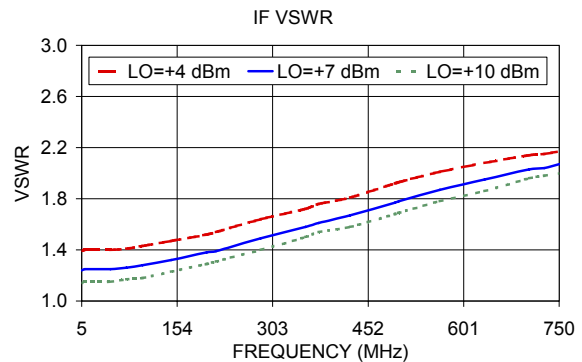
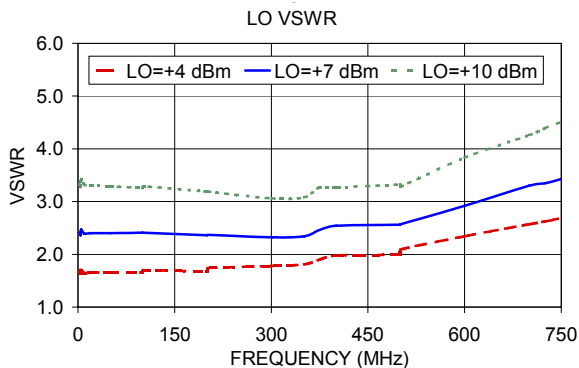
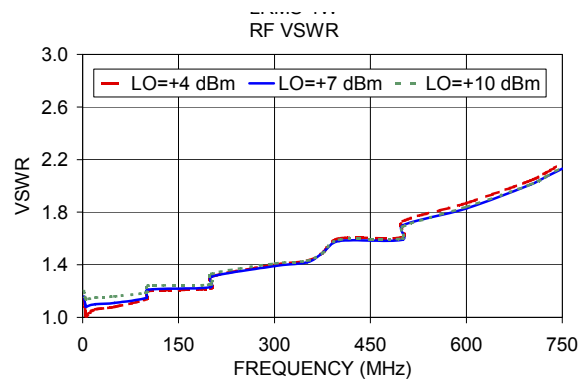
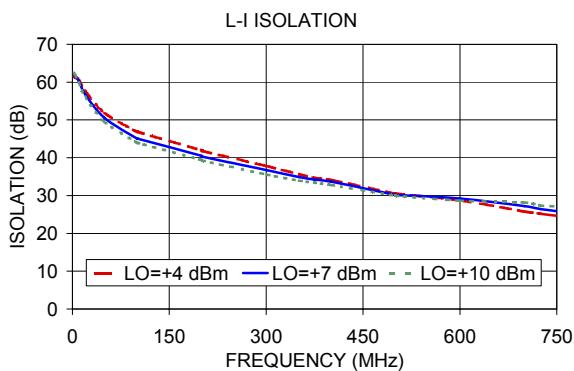
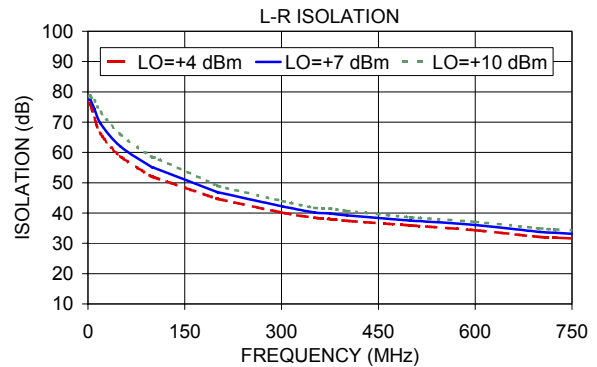
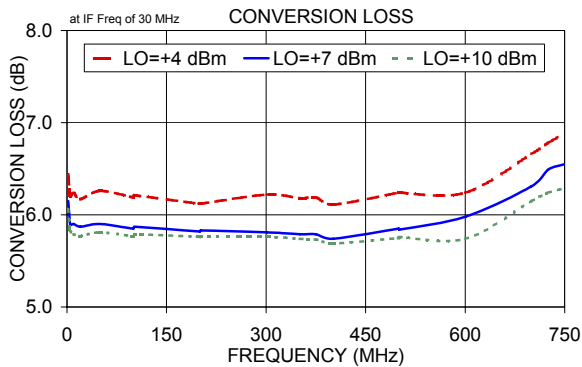
### Electrical Schematic



# NON-CATALOG

## Performance Charts

## LRMS-2+



### Notes

- A. Performance and quality attributes and conditions not expressly stated in this specification document are intended to be excluded and do not form a part of this specification document.
- B. Electrical specifications and performance data contained in this specification document are based on Mini-Circuit's applicable established test performance criteria and measurement instructions.
- C. The parts covered by this specification document are subject to Mini-Circuits standard limited warranty and terms and conditions (collectively, "Standard Terms"); Purchasers of this part are entitled to the rights and benefits contained therein. For a full statement of the Standard Terms and the exclusive rights and remedies thereunder, please visit Mini-Circuits' website at [www.minicircuits.com/MCLStore/terms.jsp](http://www.minicircuits.com/MCLStore/terms.jsp)

