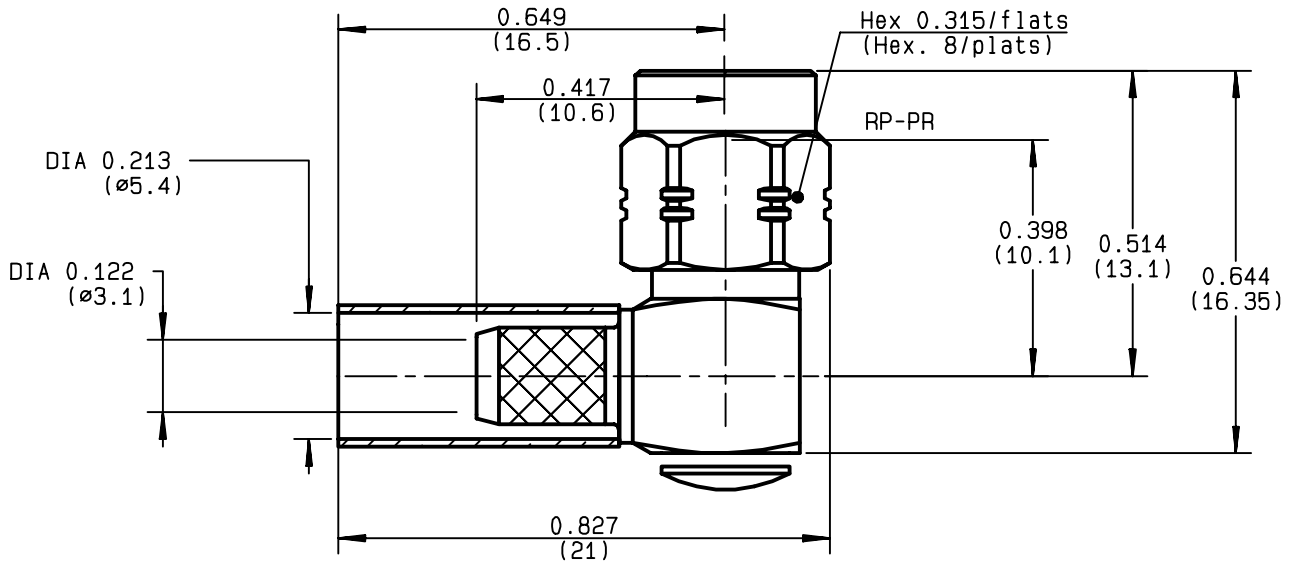


**RIGHT ANGLE PLUG CRIMP TYPE
CABLE 5/50 S**

R124.175.123
SERIES SMA-COM



NOMINAL IMPEDANCE	50 Ω	CABLES : KX 15
FREQUENCY RANGE	0-12.4 GHz	RG 141
TEMPERATURE RATING	-65/+165 °C	RG 58
V.S.W.R	1.15 + .02 x F(GHz)Maxi	
RF INSERTION LOSS	0.05 √F(GHz) dB Maxi	
VOLTAGE RATING	335 Veff Maxi	
DIELECTRIC WITHSTANDING VOLTAGE	1000 Veff Mini	
INSULATION RESISTANCE	5000 MΩMini	OTHERS CHARACTERISTICS
HERMETIC SEAL	NA Atm.cm ³ /s	CABLE RETENTION 180 N Mini
LEAKAGE (pressurized only)	NA	CENTER CONTACT RETENTION
MECHANICAL DURABILITY	100 Cycles	Axial force - mating end 27 N Mini
WEIGHT	5.5 gr	Axial force - opposite end 27 N Mini
SPECIFICATION		Torque NA cm.N Mini
		RECOMMENDED TORQUES
		Mating 60 cm.N
		Panel nut NA cm.N
		Clamp nut NA cm.N

CONNECTOR PARTS	MATERIALS	FINISH
BODY	BRASS	GOLD 0.2 OVER NICKEL 2
OUTER CONTACT		
CENTER CONTACT	BRASS	GOLD 1.3 OVER COPPER 2.5
INSULATOR	PTFE	-
GASKET		-
OTHERS PIECES	BRASS	GOLD 0.2 OVER NICKEL 2

(all values are given in micrometers)

ISSUE 9847D00	CREATION DATE 30/06/1993	FILE PART-NUMBER EPC 97-03
-------------------------	------------------------------------	--------------------------------------



Connect to the future

The information given here is subject to change without notice.
Design changes may be in order to improve the product.

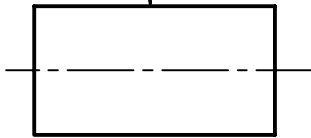
TRIQUES E.



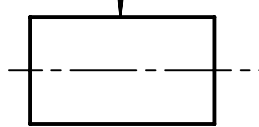
R124.175.123

ISSUE 9847D00 SERIES SMA-COM

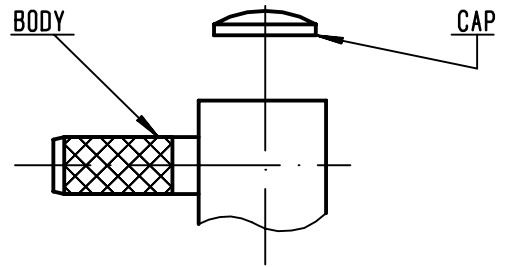
HEATSHRINK SLEEVE



FERRULE



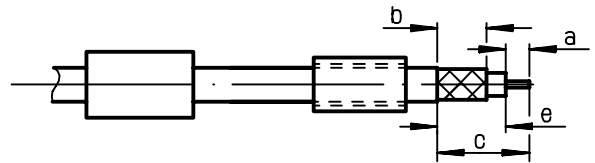
BODY



①

Slide heatshrink sleeve (R280.637.030 - Option) and the ferrule onto cable .
Strip the cable .

-
-

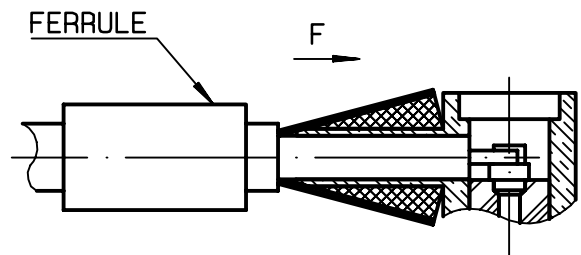


Stripping	a	b	c	d	e
inch	0.079	0.256	0.472	0	0.394
mm	2	6.5	12		10

②

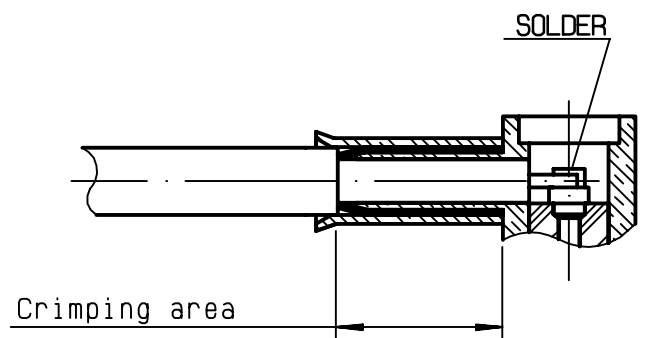
Fan the braid .
Push connector body under the braid .
Slide ferrule over braid
(in direction F)

-
-



③

Crimp the ferrule with crimping tool R282 223 000 (Hex. : 0.212) or crimping tool R 282 293 000 (M22520/5-01) + dies R 282 235 011 (M22520/5-11)
Solder inner conductor .



④

Place the cap into body.
Press cap flush or slightly below surface of body assembly .
Slide sleeve over ferrule and heatshrink in place (Option) .

-
-
-

