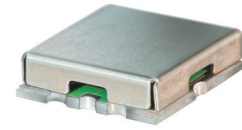


Bandpass Filter

RBP-135+

50Ω 120 to 150 MHz



CASE STYLE: GP731

Maximum Ratings

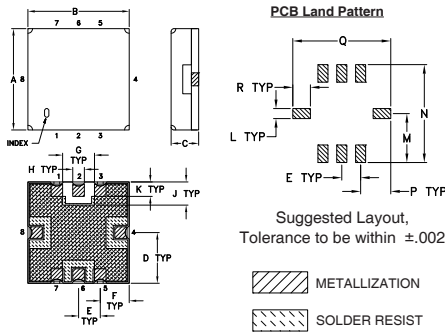
Operating Temperature	-40°C to 85°C
Storage Temperature	-55°C to 100°C
RF Power Input	0.5W at 25°C

Permanent damage may occur if any of these limits are exceeded.

Pin Connections

RF IN	2
RF OUT	6
GROUND	1,3,4,5,7,8

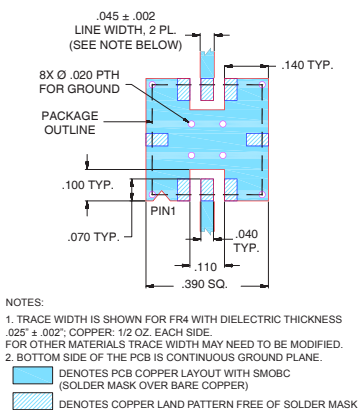
Outline Drawing



Outline Dimensions (inch/mm)

A	B	C	D	E	F	G	H	J
.350	.350	.100	.175	.075	.100	.110	.040	.080
8.89	8.89	2.54	4.45	1.93	2.54	2.79	1.02	2.03
K	L	M	N	P	Q	R		wt
.050	.040	.195	.390	.120	.390	.070		grams
1.27	1.02	4.95	9.91	3.05	9.91	1.78		0.25

Demo Board MCL P/N: TB-332 Suggested PCB Layout (PL-176)



Features

- high rejection
- linear phase, up to ±6deg typ. @ Fc ±15MHz
- good VSWR, 1.3:1 typ. @ passband
- small size 0.35" x 0.35"
- shielded case
- aqueous washable

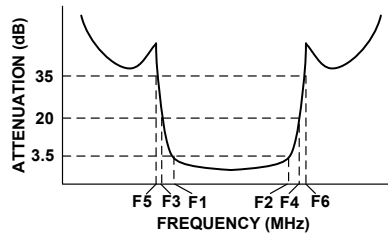
Applications

- harmonic rejection
- transmitters / receivers
- base station

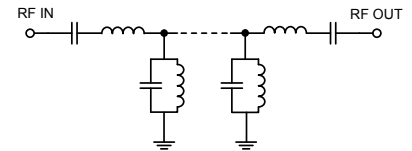
Bandpass Filter Electrical Specifications (T_{AMB} = 25°C)

CENTER FREQ. (MHz)	PASSBAND (MHz) (Loss < 3.5dB)	STOPBANDS (MHz)				MAXIMUM DEVIATION FROM LINEAR PHASE (deg.)	VSWR (:1)	
		Loss > 20dB	Loss > 35dB	F3	F4		Passband	Stopband
Fc	F1 - F2	F3	F4	F5	F6	Fc ± 15MHz	Typ. Max.	Typ.
135	120 - 150	85	210	75	245-2000	±12	1.3 1.8	18

Typical Frequency Response

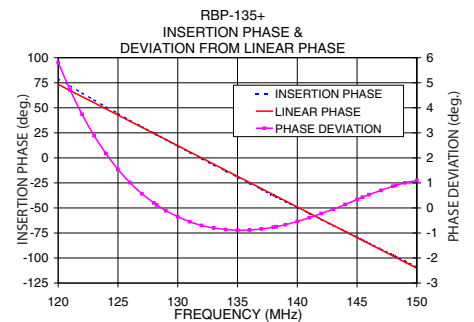
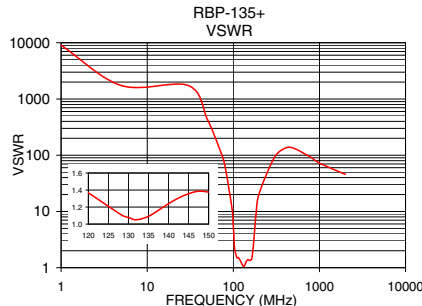
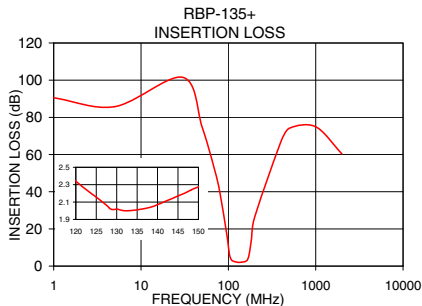


Functional Schematic



Typical Performance Data at 25°C

Frequency (MHz)	Insertion Loss (dB)	VSWR (:1)	Frequency (MHz)	Deviation from Linear Phase (deg)
1.0	90.55	9035.28	120.0	5.81
40.0	90.05	868.59	122.0	3.74
75.0	45.52	91.43	123.0	2.89
85.0	33.18	43.44	125.0	1.54
95.0	18.74	14.50	127.0	0.57
100.0	10.53	5.47	129.0	-0.11
104.0	5.28	1.93	130.0	-0.35
120.0	2.26	1.28	131.0	-0.55
135.0	2.01	1.09	133.0	-0.80
150.0	2.28	1.39	135.0	-0.89
170.0	4.81	2.24	137.0	-0.84
177.0	9.12	4.79	140.0	-0.54
210.0	31.97	29.46	143.0	-0.05
245.0	45.60	56.04	145.0	0.34
500.0	74.19	133.63	147.0	0.70
1000.0	74.95	72.39	149.0	1.00
2000.0	60.33	45.72	150.0	1.10



Notes

- Performance and quality attributes and conditions not expressly stated in this specification document are intended to be excluded and do not form a part of this specification document.
- Electrical specifications and performance data contained in this specification document are based on Mini-Circuit's applicable established test performance criteria and measurement instructions.
- The parts covered by this specification document are subject to Mini-Circuits standard limited warranty and terms and conditions (collectively, "Standard Terms"); Purchasers of this part are entitled to the rights and benefits contained therein. For a full statement of the Standard Terms and the exclusive rights and remedies thereunder, please visit Mini-Circuits' website at www.minicircuits.com/MCLStore/terms.jsp

