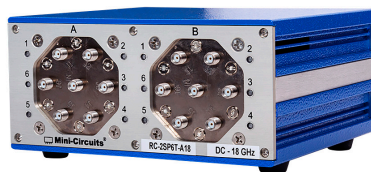


# USB/Ethernet RF Switch Matrix RC-2SP6T-A18

50Ω DC to 18 GHz

## The Big Deal

- Dual mechanical SP6T switch box
- High reliability, 10 million switch cycles
- 20W power rating (cold switching)
- High isolation, 90 dB typ



Case Style: PF2018

Software Package

**RoHS Compliant**  
See our web site for RoHS Compliance methodologies and qualifications

## Applications

- R&D
- Automated Test equipment
- Controlling RF signal paths

## Product Overview

Mini-Circuits' RC-2SP6T-A18 comprises a pair of independently controlled, electro-mechanical SP6T switches. Each switch operates over an extremely wide bandwidth, from DC to 18 GHz with high isolation and low insertion loss. The absorptive switches are of a failsafe and break-before-make-configuration, with a minimum lifetime of 10 million switching cycles per switch position, when used within the noted specifications.

The switch box is constructed in a compact, rugged metal case (5.5 x 6.0 x 2.75") with 14 SMA (f) RF connectors on the front panel. The switches are controlled via USB or Ethernet, allowing control directly from a PC, or remotely over a network. Full software support is provided, including our user-friendly GUI application for Windows and a full API with programming instructions for Windows and Linux environments (both 32-bit and 64-bit systems).

## Key Features

Feature	Advantages
Dual mechanical SP6T switches	Mechanical absorptive switches provide high reliability, repeatable high performance and internal terminations of input signals on the disconnected paths
Operation from DC to 18 GHz	Supports a wide range of RF test and signal routing applications, including 2G, 3G, 4G and 5G, with a single device
Break-before-make configuration	Prevents a momentary connection of the old and new signal paths, reducing the inconsistent transient effects that could otherwise be observed during switching
USB & Ethernet control	USB HID and Ethernet (HTTP / Telnet) interfaces provide easy compatibility with a wide range of software setups and programming environments
Full software support	User friendly Windows GUI (graphical user interface) allows manual control straight out of the box, while the comprehensive API (application programming interface) with examples and instructions allows easy automation in most programming environments

<sup>1</sup> Windows is a registered trademarks of Microsoft Corporation in the United States and other countries. Linux is a registered trademark of Linus Torvalds. Mac is a registered trademark of Apple Corporation in the United States and other countries.  
Neither Mini-Circuits nor the Mini-Circuits RC-2SP6T-A18 are affiliated with or endorsed by the owners of the above referenced trademarks.

Mini-Circuits and the Mini-Circuits logo are registered trademarks of Scientific Components Corporation.



## Electrical Specifications

Parameter	Conditions	Min.	Typ.	Max.	Units
Frequency		DC		18	GHz
Insertion Loss (per Switch)	DC to 1 GHz	-	0.04	0.10	dB
	1 to 8 GHz	-	0.10	0.25	
	8 to 12 GHz	-	0.20	0.30	
	12 to 18 GHz	-	0.40	0.80	
Isolation (per Switch)	DC to 1 GHz	90	100	-	dB
	1 to 8 GHz	85	100	-	
	8 to 12 GHz	75	100	-	
	12 to 18 GHz	75	100	-	
VSWR	DC to 1 GHz	-	1.05	-	:1
	1 to 8 GHz	-	1.15	-	
	8 to 12 GHz	-	1.20	-	
	12 to 18 GHz	-	1.43	-	
Switching Time	-	-	20	-	ms
RF Input Power (Cold Switching) <sup>1</sup>		-	-	20	W
Switch Lifetime (per Switch)	100mW hot switching <sup>2</sup>	10	-	-	million switching cycles
	1W hot switching	-	1	-	
Rated Voltage	24V <sub>DC</sub> input	23	24	25	V
	USB port	-	5	-	
Rated Current (24V DC Input)	Both switches in state 1-4	-	160	230	mA
	Both switches in state 0	-	60	90	
Rated Current (USB)		-	10	20	mA

<sup>1</sup> Maximum power for any connected through path as stated; maximum power into any internal termination is 1W per port, 3W total per switch

<sup>2</sup> Hot switching powers above this level will degrade the switch lifetime

## Absolute Maximum Ratings

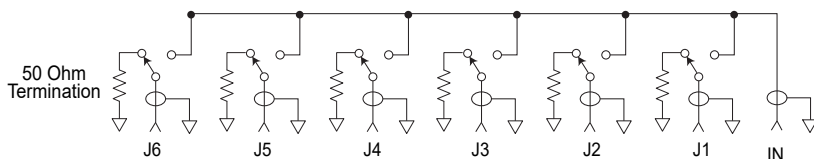
Operating Temperature	0°C to 40°C
Storage Temperature	-15°C to 85°C
DC Voltage max.	26V
RF power (through path)	20W
RF power (into internal termination) <sup>3</sup>	1W

<sup>3</sup> 1W per termination, 3W total

Permanent damage may occur if any of these limits are exceeded.

## Switching Configuration:

- Normally open (all port disconnected)
- Absorptive (internal terminations on ports J1-J6)

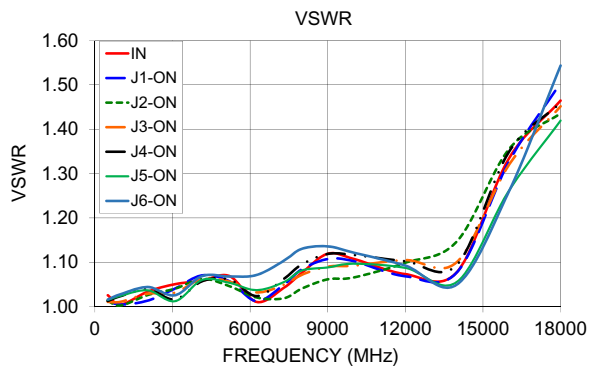
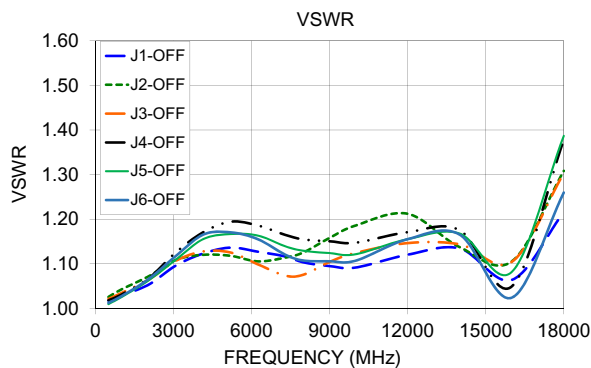
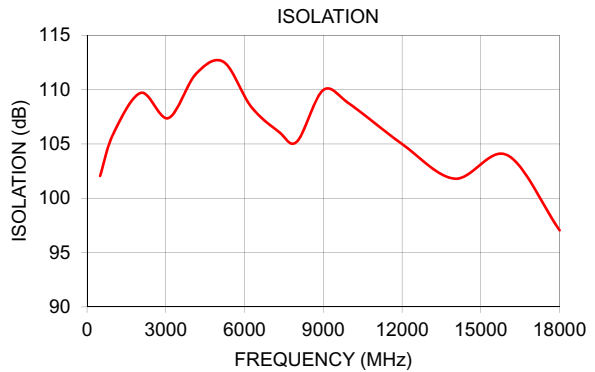


## Connections

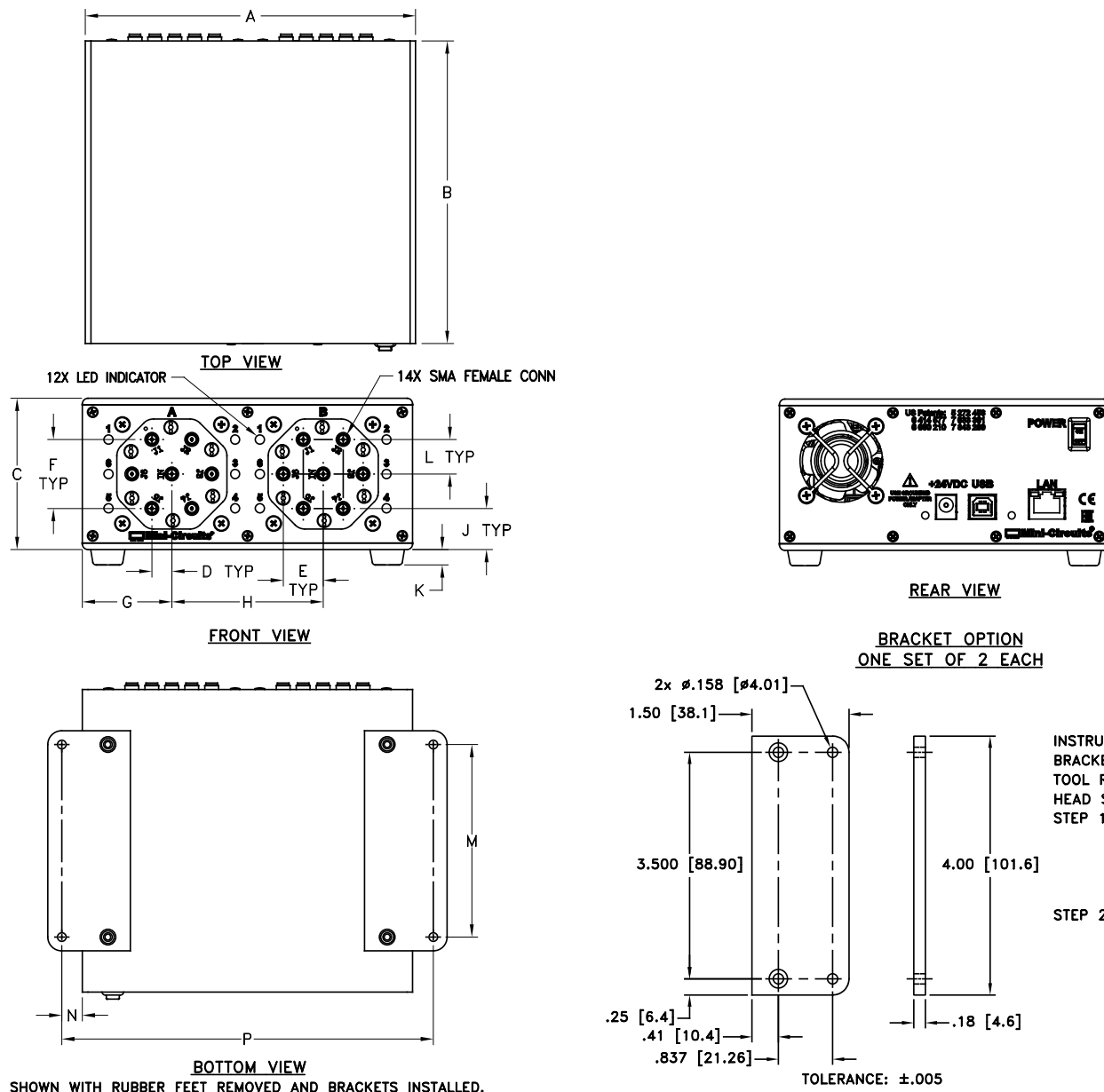
24V <sub>DC</sub> IN	(2.1 mm center positive DC Socket)
RF Switch A (All ports)	(SMA female)
RF Switch B (All ports)	(SMA female)
USB	(USB type B receptacle)
Network (Ethernet/LAN)	(RJ45 socket)

## Typical Performance Data

FREQ. (MHz)	ON INSERTION LOSS (dB)						ISOLATION (dB)	VSWR						
	IN-J1	IN-J2	IN-J3	IN-J4	IN-J5	IN-J6		IN	J1-ON	J2-ON	J3-ON	J4-ON	J5-ON	J6-ON
500	0.02	0.01	0.01	0.01	0.01	0.01	102.06	1.03	1.01	1.01	1.01	1.01	1.01	1.02
1000	0.02	0.02	0.02	0.02	0.02	0.02	105.92	1.00	1.00	1.00	1.01	1.02	1.02	1.03
2050	0.04	0.04	0.03	0.04	0.03	0.04	109.70	1.03	1.01	1.03	1.03	1.04	1.04	1.04
3100	0.05	0.05	0.05	0.05	0.04	0.04	107.38	1.05	1.04	1.04	1.03	1.02	1.01	1.03
4150	0.06	0.06	0.05	0.06	0.05	0.05	111.45	1.06	1.07	1.06	1.06	1.06	1.06	1.07
5200	0.07	0.07	0.07	0.07	0.06	0.07	112.55	1.07	1.06	1.05	1.06	1.06	1.05	1.07
6250	0.08	0.08	0.07	0.08	0.07	0.08	108.43	1.01	1.01	1.02	1.03	1.02	1.04	1.07
7300	0.10	0.09	0.09	0.10	0.09	0.10	106.13	1.04	1.05	1.02	1.05	1.06	1.06	1.10
8000	0.11	0.10	0.10	0.11	0.10	0.11	105.22	1.08	1.08	1.04	1.07	1.10	1.08	1.13
9000	0.13	0.12	0.11	0.13	0.11	0.12	109.97	1.12	1.11	1.06	1.09	1.12	1.09	1.14
10000	0.14	0.13	0.12	0.13	0.12	0.13	108.68	1.11	1.10	1.07	1.09	1.12	1.10	1.12
12000	0.14	0.15	0.13	0.14	0.14	0.14	105.00	1.07	1.07	1.10	1.10	1.10	1.09	1.09
14000	0.19	0.20	0.18	0.18	0.17	0.18	101.80	1.08	1.08	1.15	1.10	1.09	1.06	1.05
16000	0.37	0.33	0.36	0.35	0.30	0.30	103.98	1.33	1.33	1.35	1.32	1.35	1.26	1.26
18000	0.47	0.40	0.44	0.43	0.36	0.43	97.06	1.46	1.50	1.44	1.45	1.46	1.42	1.54



## Outline Drawing (PF2018)



## Outline Dimensions (inch mm)

A	B	C	D	E	F	G	H	J	K	L	M	N	P	wt
6.00	5.50	2.75	0.36	0.73	1.26	1.63	2.75	0.75	0.28	0.63	3.50	0.375	6.72	grams
152.40	139.70	69.85	9.14	18.54	32.00	41.40	69.85	19.05	7.11	16.00	88.90	9.53	170.69	1350

**Software Specifications****Software & Documentation Download:**

- Mini-Circuits' full software and support package including user guide, Windows GUI, DLL files, programming manual and examples can be downloaded free of charge from <https://www.minicircuits.com/softwaredownload/rfswitchcontroller.html>
- Please contact [testsolutions@minicircuits.com](mailto:testsolutions@minicircuits.com) for support

**Minimum System Requirements:**

Parameter	Requirements	
Interface	USB HID & Ethernet (HTTP & Telnet)	
System Requirements	GUI	Windows 98 or later
	USB API DLL	Windows 98 or later and programming environment with ActiveX or .NET support
	USB Direct Programming	Linux, Windows 98 or later
	Ethernet	Windows, Linux or Mac computer with a network port and Ethernet TCP/IP support
Hardware	Pentium II or later with 256 MB RAM	

**Application Programming Interface (API)****Ethernet Support:**

- Simple ASCII / SCPI command set for attenuator control
- Communication via HTTP or Telnet
- Supported by most common programming environments

**USB Support (Windows):**

- ActiveX COM DLL file for creation of 32-bit programs
- .NET library DLL file for creation of 32 / 64-bit programs
- Supported by most common programming environments (refer to application note AN-49-001 for summary of supported environments)

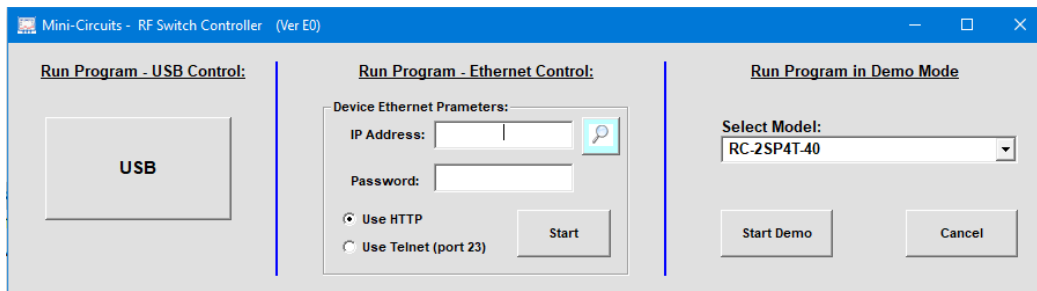
**USB Support (Linux):**

- Direct USB programming using a series of USB interrupt codes

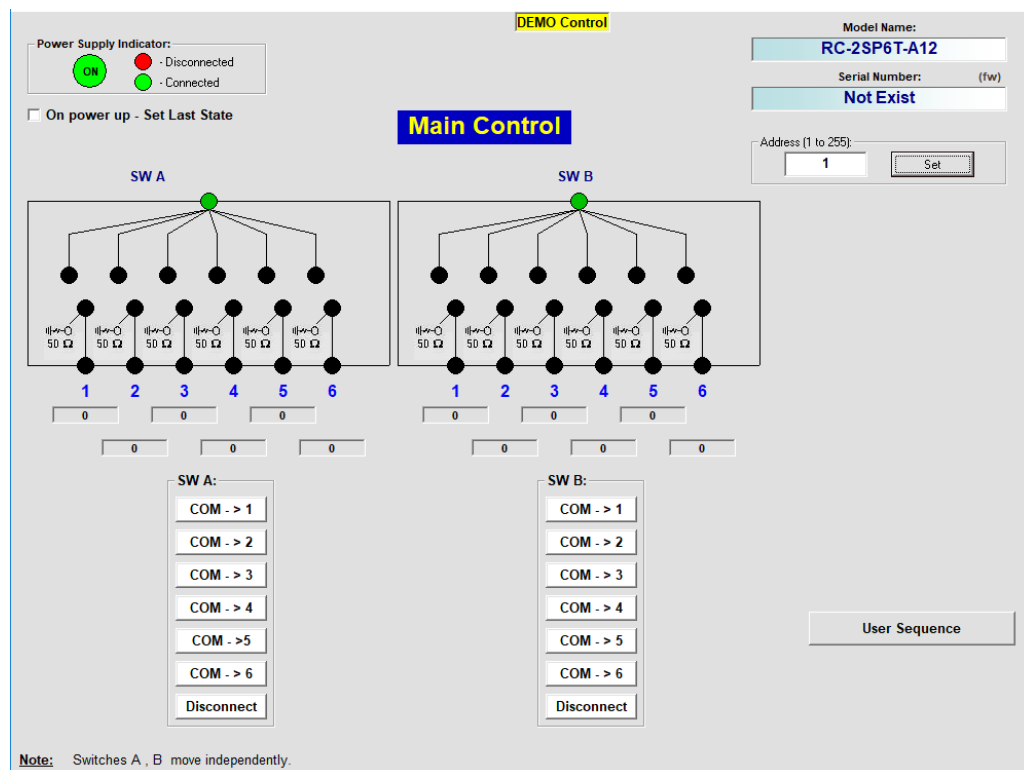
Full programming instructions and examples available for a wide range of programming environments / languages.

## Graphical User Interface (GUI) for Windows - Key Features

- Connect via USB or Ethernet
- Run GUI in “demo mode” to evaluate software without a hardware connection







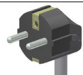



- View and set switch states at the click of a button
- Configure and run timed switching sequences
- Set start-up switch state
- Configure Ethernet IP settings



Ordering, Pricing & Availability Information see our web site

Model	Description
RC-2SP6T-A18	USB/Ethernet RF SP6T Switch Matrix

Included Accessories	Part No.	Description
	AC/DC-24-3W1	AC/DC 24V <sub>DC</sub> Grounded Power Adaptor. Operating temperature: 0°C to +40°C, I <sub>Max</sub> =2.5A
	CBL-3W1-XX	AC Power Cord (Select one power cord from below with each Switch Matrix box)
	USB-CBL-AB-3+	2.7 ft (0.8 m) USB Cable: USB type A(Male) to USB type B(Male)
	CBL-RJ45-MM-5+	5 ft (1.5 m) Ethernet cable: RJ45(Male) to RJ45(Male) Cat 5E cable

AC Power Cords <sup>7</sup>	Part No.	Description
	CBL-3W1-US	Power Cord for United States
	CBL-3W1-EU	Power Cord for Europe
	CBL-3W1-UK	Power Cord for United Kingdom
	CBL-3W1-AU	Power Cord for Australia and China
	CBL-3W1-IL	Power Cord for Israel

<sup>7</sup> Power cords for other countries are also available, if you need a power cord for a country not listed in the table please contact [apps@minicircuits.com](mailto:apps@minicircuits.com) or check <http://www.minicircuits.com/contact/offices.html> for regional offices e-mail and phone numbers.

Optional Accessories	Description
USB-CBL-AB-3+	2.7 ft (0.8 m) USB Cable: USB type A(Male) to USB type B(Male)
USB-CBL-AB-7+	6.8 ft (2.1 m) USB Cable: USB type A(Male) to USB type B(Male)
USB-CBL-AB-11+	11 ft (3.4 m) USB Cable: USB type A(Male) to USB type B(Male)
CBL-RJ45-MM-5+ (spare)	5 ft (1.5 m) Ethernet cable: RJ45(Male) to RJ45(Male) Cat 5E cable
BKT-272-08+	Bracket (One set of 2 each)

### Additional Notes

- A. Performance and quality attributes and conditions not expressly stated in this specification document are intended to be excluded and do not form a part of this specification document.
- B. Electrical specifications and performance data contained in this specification document are based on Mini-Circuit's applicable established test performance criteria and measurement instructions.
- C. The parts covered by this specification document are subject to Mini-Circuits standard limited warranty and terms and conditions (collectively, "Standard Terms"); Purchasers of this part are entitled to the rights and benefits contained therein. For a full statement of the Standard Terms and the exclusive rights and remedies thereunder, please visit Mini-Circuits' website at [www.minicircuits.com/MCLStore/terms.jsp](http://www.minicircuits.com/MCLStore/terms.jsp)

