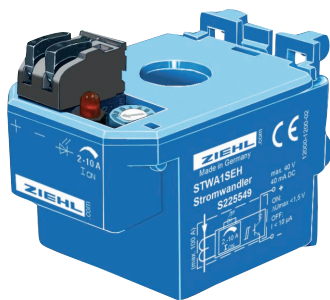


AC-Electronic Current Transformer STWA1SEH

adjustable 2...10 A, with transistor-output

STWA1SEH

Electronic current transformer with fixed switching-point 2...10 A



Part number: **S225549**

The STWA1SEH has an integrated electronic with transistor-output.

The switching point is adjustable 2-10A. Above switching-point the output transistor is switched on, below it is off.

The conductor is simply pushed through the transformer. Multiple loops reduce the switching point correspondingly, for instance to 0.5-2,5A with four loops. A supply voltage is not required.

For monitoring of higher currents, the STWA1SEH is simply looped into the secondary current of big current transformers.

Application: The STWA1SE is used where AC current flow is to be detected in a conductor, e.g. to give a warning if a defined current value is exceeded or not reached, or to switch off a machine or to simply report the current flow.

- adjustable switching limit 2...10 A
- isolated transistor-output max. DC 40 V/40 mA
- output can be directly connected to the digital input of a PLC
- LED for display state of output
- integrated diode for reverse voltage protection
- electrical connection via screwless pluggable terminals
- no supply voltage required
- plug-in current transformer (Ø 11 mm)
- max. overload 100 A continuously, 300 A / 10 s

Switching point at $T_u = 25^\circ\text{C}$

Hysteresis

Repeat accuracy

Temperature dependence

Overload cap. continuous / 10s

Output voltage/current max.

Voltage drop (ON)

Leak current (OFF)

Switch-on /switch-off delay

nominal frequency

operating range

error

rated ambient temperature range

range

Housing

Dimensions (h x w x d)

Diameter for conductor

Weight

AC 2...10 A $\pm 25\%$

5...30 %

$\pm 2\%$

$< 0,06\%/K$

100 A / 300 A

DC 40 V / 40 mA

max. 1,5 V

max. 0,6 mA

0,2...2s / $\leq 0,3$ s

50 Hz

30...70 Hz

$\leq 3\%/Hz$

-20...+50°C

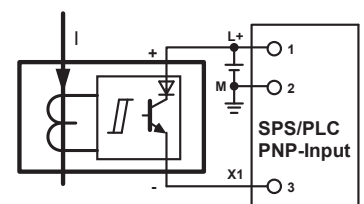
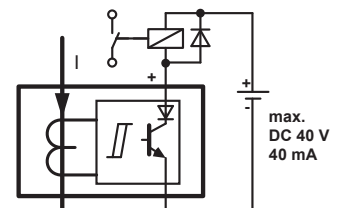
range

Design H

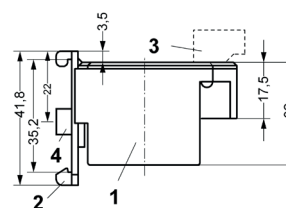
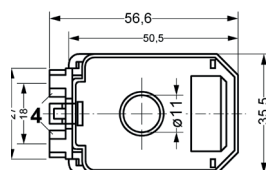
50 x 36 x 56 mm

11 mm

app. 90 g



Dimension illustrations



- 1 Housing
- 2 Clip for DIN-rail (removeable)
- 3 Terminal (pluggable)
- 4 Wall-mounting (M4)