

Low Pass Filter

SXLP-135+

50Ω DC to 135 MHz

Maximum Ratings

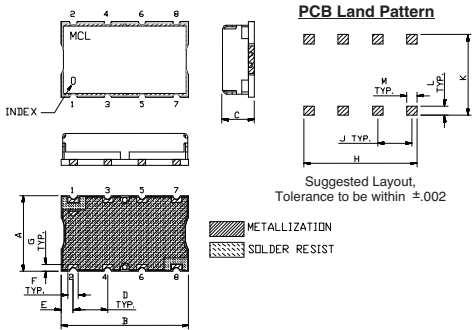
Operating Temperature	-40°C to 85°C
Storage Temperature	-55°C to 100°C
RF Power Input	0.5W Max.

Permanent damage may occur if any of these limits are exceeded.

Pin Connections

INPUT	1
OUTPUT	8
GROUND	2, 3, 4, 5, 6, 7

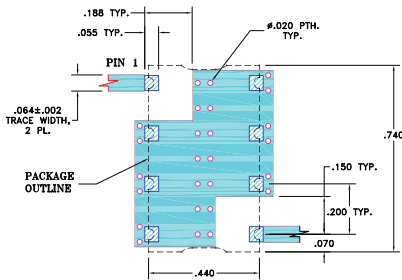
Outline Drawing



Outline Dimensions (inch/mm)

Dimension	Value (inch)	Value (mm)
A	.44	11.18
B	.74	18.80
C	.27	6.86
D	.200	5.08
E	.07	1.78
F	.060	1.52
G	.040	1.02
H	.660	16.76
J	.200	5.08
K	.470	11.94
L	.055	1.40
M	.060	1.52
wt.		3.0 grams

Demo Board MCL P/N: TB-368 Suggested PCB Layout (PL-230)

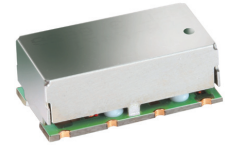


Features

- high rejection
- sharp cut-off
- shielded package
- aqueous washable
- low cost

Applications

- defense communications
- receivers / transmitters
- harmonic rejection



CASE STYLE: HF1139
PRICE: \$11.45 ea. QTY (1-9)

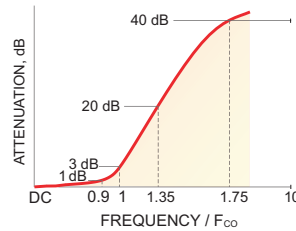
+RoHS Compliant

The +Suffix identifies RoHS Compliance. See our web site for RoHS Compliance methodologies and qualifications

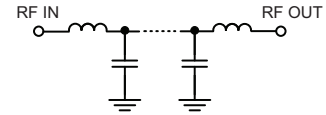
Low Pass Filter Electrical Specifications (T_{AMB} = 25°C)

PASSBAND (MHz)	f _{co} , MHz Nom.	STOPBAND (MHz)		VSWR (:1)	
		(Loss > 20dB)	(Loss > 40dB)	Passband Typ.	Stopband Typ.
DC - 135	155	210 - 300	300 - 1600	1.3	18

Typical Frequency Response

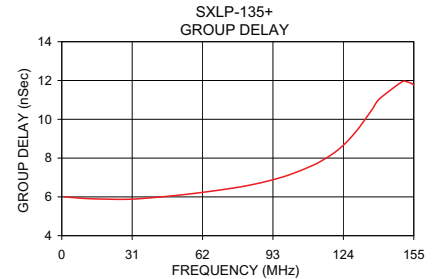
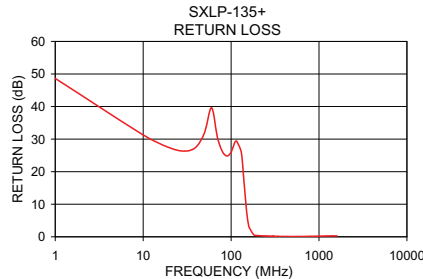
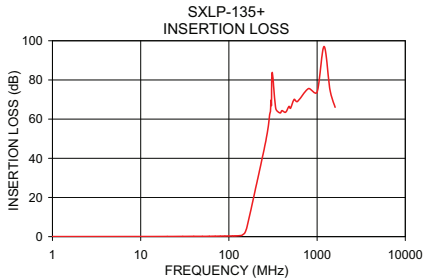


Functional Schematic



Typical Performance Data at 25°C

Frequency (MHz)	Insertion Loss (dB)		Return Loss (dB)	Frequency (MHz)	Group Delay (nSec)
	\bar{x}	σ			
1.0	0.02	0.00	48.64	1.0	6.00
10.0	0.07	0.00	31.28	10.0	5.92
30.0	0.14	0.01	26.33	20.0	5.88
90.0	0.29	0.01	24.81	30.0	5.88
135.0	0.53	0.01	22.58	40.0	5.96
150.0	1.66	0.08	7.91	50.0	6.07
155.0	2.98	0.16	4.92	60.0	6.20
160.0	4.95	0.25	2.97	70.0	6.36
180.0	15.25	0.53	0.69	80.0	6.54
210.0	29.11	0.75	0.34	90.0	6.79
280.0	56.34	2.26	0.18	100.0	7.13
300.0	66.63	5.05	0.16	110.0	7.60
400.0	64.93	2.59	0.09	115.0	7.90
600.0	70.93	3.59	0.10	120.0	8.28
800.0	79.87	3.41	0.15	130.0	9.43
1000.0	79.15	5.76	0.19	135.0	10.24
1200.0	83.19	8.67	0.24	140.0	11.06
1400.0	75.49	3.01	0.27	150.0	11.95
1600.0	66.38	2.01	0.28	155.0	11.77



For detailed performance specs & shopping online see web site

P.O. Box 350166, Brooklyn, New York 11235-0003 (718) 934-4500 Fax (718) 332-4661 The Design Engineers Search Engine Provides ACTUAL Data Instantly at minicircuits.com

Notes: 1. Performance and quality attributes and conditions not expressly stated in this specification sheet are intended to be excluded and do not form a part of this specification sheet. 2. Electrical specifications and performance data contained herein are based on Mini-Circuit's applicable established test performance criteria and measurement instructions. 3. The parts covered by this specification sheet are subject to Mini-Circuits standard limited warranty and terms and conditions (collectively, "Standard Terms"); Purchasers of this part are entitled to the rights and benefits contained therein. For a full statement of the Standard Terms and the exclusive rights and remedies thereunder, please visit Mini-Circuits' website at www.minicircuits.com/MCLStore/terms.jsp.

REV. OR
M112220
EDR-7468/1U
SXLP-135+
URJ/RAV
121016
Page 1 of 1