

Coaxial Directional Coupler

50Ω

10 to 1000 MHz

ZFDC-20-4L



Generic photo used for illustration purposes only
CASE STYLE: K18

Connectors Model
SMA ZFDC-20-4L
BRACKET (OPTION "B")

Maximum Ratings

Operating Temperature -55°C to 100°C

Storage Temperature -55°C to 100°C

Permanent damage may occur if any of these limits are exceeded.

Coaxial Connections

| | |
|---------|---|
| INPUT | 1 |
| OUTPUT | 2 |
| COUPLED | 3 |

Features

- wideband, 10 to 1000 MHz
- excellent directivity, 30 dB typ.
- excellent mainline loss, 0.3 dB typ.
- excellent VSWR, 1.1:1 typ.
- rugged shielded case

Applications

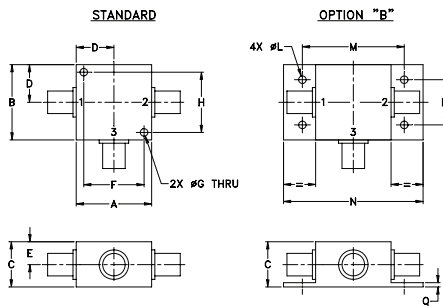
- VSWR measurement
- power monitoring
- power leveling

Electrical Specifications

| FREQ. RANGE (MHz) | COUPLING (dB) | | MAINLINE LOSS ¹ (dB) | | | | | | DIRECTIVITY (dB) | | | | | | VSWR (:1) | POWER INPUT (W) | | |
|-------------------|---------------|----------|---------------------------------|------|------|------|------|------|------------------|------|------|------|------|------|-----------|-----------------|-----|----|
| | Nom. | Flatness | L | | M | | U | | L | | M | | U | | | Typ. | L | MU |
| | | | Typ. | Max. | Typ. | Max. | Typ. | Max. | Typ. | Min. | Typ. | Min. | Typ. | Min. | | | | |
| 10-1000 | 20.2±0.5 | ±0.5 | 0.2 | 0.5 | 0.3 | 0.7 | 0.7 | 1.2 | 40 | 20 | 30 | 16 | 20 | 14 | 1.1 | 1.0 | 1.0 | |

L = low range [f_L to $10 f_L$] M = mid range [$10 f_L$ to $f_U/2$] U = upper range [$f_U/2$ to f_U]
1. Mainline loss includes theoretical power loss at coupled port.

Outline Drawing



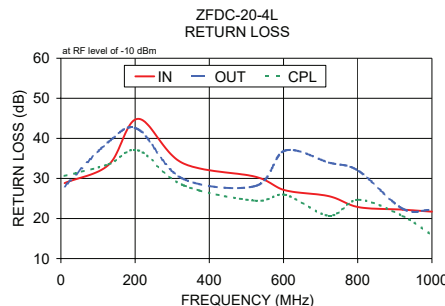
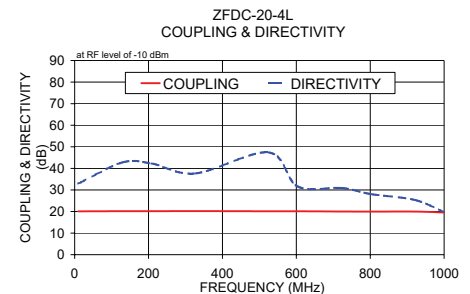
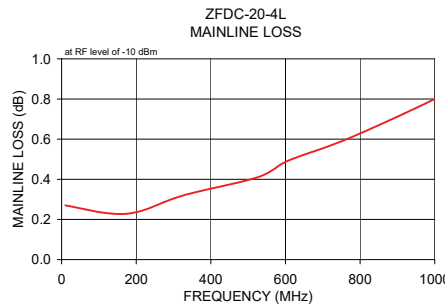
Outline Dimensions (inch/mm)

| A | B | C | D | E | F | G | H |
|-------|-------|-------|-------|------|-------|------|-------|
| 1.25 | 1.25 | .75 | .63 | .38 | 1.00 | .125 | 1.000 |
| 31.75 | 31.75 | 19.05 | 16.00 | 9.65 | 25.40 | 3.18 | 25.40 |

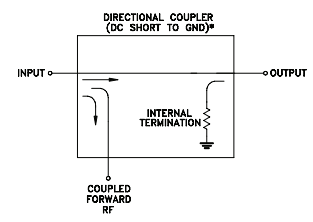
| J | K | L | M | N | P | Q | wt |
|----|----|------|-------|-------|-------|------|-------|
| -- | -- | .125 | 1.688 | 2.18 | .75 | .07 | grams |
| -- | -- | 3.18 | 42.88 | 55.37 | 19.05 | 1.78 | 70.0 |

Typical Performance Data

| Frequency (MHz) | Mainline Loss (dB) In-Out | Coupling (dB) In-Cpl | Directivity (dB) | Return Loss (dB) | | Cpl |
|-----------------|---------------------------|----------------------|------------------|------------------|-------|-------|
| | | | | In | Out | |
| 10.00 | 0.27 | 20.09 | 32.95 | 28.83 | 28.03 | 30.63 |
| 128.80 | 0.23 | 20.16 | 42.77 | 33.41 | 39.14 | 33.55 |
| 208.00 | 0.24 | 20.16 | 42.27 | 44.88 | 42.27 | 37.03 |
| 326.80 | 0.32 | 20.21 | 37.67 | 33.89 | 30.03 | 28.43 |
| 524.80 | 0.41 | 20.12 | 47.40 | 30.41 | 28.13 | 24.44 |
| 604.00 | 0.49 | 20.13 | 31.59 | 27.05 | 36.95 | 25.93 |
| 722.80 | 0.57 | 20.01 | 30.93 | 25.57 | 33.97 | 20.69 |
| 802.00 | 0.63 | 19.96 | 28.10 | 22.83 | 31.91 | 24.67 |
| 920.80 | 0.73 | 19.96 | 25.36 | 22.22 | 22.46 | 20.64 |
| 1000.00 | 0.80 | 19.57 | 19.77 | 21.71 | 22.17 | 15.92 |



Electrical Schematic



* ELECTRICAL SCHEMATIC IS FOR DIRECTIONAL COUPLER WITH INTERNAL TRANSFORMERS THAT ROUTES DC FROM RF PORTS TO GROUND.

Notes

- Performance and quality attributes and conditions not expressly stated in this specification document are intended to be excluded and do not form a part of this specification document.
- Electrical specifications and performance data contained in this specification document are based on Mini-Circuit's applicable established test performance criteria and measurement instructions.
- The parts covered by this specification document are subject to Mini-Circuits standard limited warranty and terms and conditions (collectively, "Standard Terms"); Purchasers of this part are entitled to the rights and benefits contained therein. For a full statement of the Standard Terms and the exclusive rights and remedies thereunder, please visit Mini-Circuits' website at www.minicircuits.com/MCLStore/terms.jsp

