

Coaxial High Power Amplifier

ZVE-3W-183+

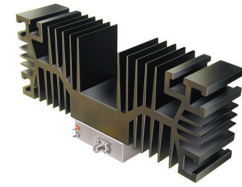
50Ω 3W 5.9 to 18 GHz

Features

- High power, 3 Watt
- Wideband, 5.9 to 18 GHz
- High IP3, +44 dBm typ.
- High dynamic range
- High gain, 35dB typ. and good directivity, 35dB typ.
- Internal voltage regulated for 13 to 18VDC

Applications

- Radar
- Video and test instrumentation
- Booster amplifiers for lab test equipment



CASE STYLE: BN1327

Connectors	Model
SMA	ZVE-3W-183+

+RoHS Compliant

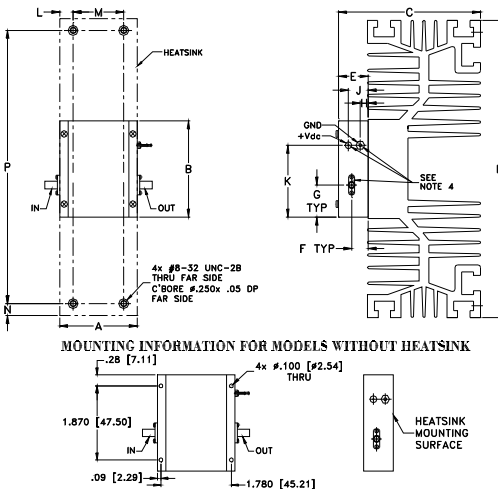
The +Suffix identifies RoHS Compliance. See our web site for RoHS Compliance methodologies and qualifications

Electrical Specifications

Parameter	Condition (MHz)	ZVE-3W-183+			Units
		Min.	Typ.	Max.	
Frequency Range		5900	—	18000	MHz
Gain	5900-18000	29	35	40	dB
Gain Flatness	5900-18000	—	±1.4	±2.0	dB
Output Power at 1dB compression	5900-18000	+31.5	+34	—	dBm
Saturated Output Power at 3dB compression	5900-18000	+32.5	+35	—	dBm
Noise Figure	5900-18000	—	5.5	—	dB
Output third order intercept point	5900-18000	—	+44	—	dBm
Input VSWR	5900-18000	—	1.5	2.0	:1
Output VSWR	5900-18000	—	1.2	2.0	:1
DC Supply Voltage		13	15	18	V
Supply Current ¹		—	1.3	2.2	A

1. Power Supply should be capable of delivering 3A at start-up.

Outline Drawing



Maximum Ratings

Parameter	Ratings
Operating Ambient Temperature	-40°C to 55°C
Base Plate Temperature	85°C
Storage Temperature	-55°C to 100°C
DC Voltage	18V
Input RF Power (no damage)	+20 dBm

Permanent damage may occur if any of these limits are exceeded.

Outline Dimensions (inch / mm)

A	B	C	D	E	F	G	H	J	K	L	M	N	P	wt
1.960	2.430	3.6	7.5	.74	.42	.81	.20	.49	1.81	0.355	1.250	.30	6.900	grams*
49.78	61.72	91.44	190.50	18.80	10.67	20.57	5.08	12.45	45.97	9.02	31.75	7.62	175.26	875

*120 grams without heatsink

Notes

- A. Performance and quality attributes and conditions not expressly stated in this specification document are intended to be excluded and do not form a part of this specification document.
 B. Electrical specifications and performance data contained in this specification document are based on Mini-Circuit's applicable established test performance criteria and measurement instructions.
 C. The parts covered by this specification document are subject to Mini-Circuits standard limited warranty and terms and conditions (collectively, "Standard Terms"); Purchasers of this part are entitled to the rights and benefits contained therein. For a full statement of the Standard Terms and the exclusive rights and remedies thereunder, please visit Mini-Circuits' website at www.minicircuits.com/MCLStore/terms.jsp



www.minicircuits.com P.O. Box 350166, Brooklyn, NY 11235-0003 (718) 934-4500 sales@minicircuits.com

REV. D
 M157961
 ZVE-3W-183+
 ED-13263/1
 WZ/CP/AM
 160902
 Page 2 of 3