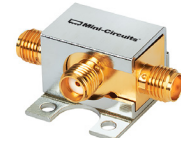


Coaxial Frequency Mixer

ZX05-30W-S+

Level 7 (LO Power +7 dBm) 300 to 4000



Generic photo used for illustration purposes only

CASE STYLE: FL905

Connectors	Model
SMA	ZX05-30W-S+

+RoHS Compliant

The +Suffix identifies RoHS Compliance. See our web site for RoHS Compliance methodologies and qualifications

Maximum Ratings

Operating Temperature	-40°C to 85°C
Storage Temperature	-55°C to 100°C
RF Power	50mW
IF Current	40mA

Permanent damage may occur if any of these limits are exceeded.

Coaxial Connections

LO	1
RF	2
IF	3

Features

- rugged construction
- small size
- low conversion loss
- high L-R isolation
- protected by US Patents 6,133,525 & 6,790,049

Applications

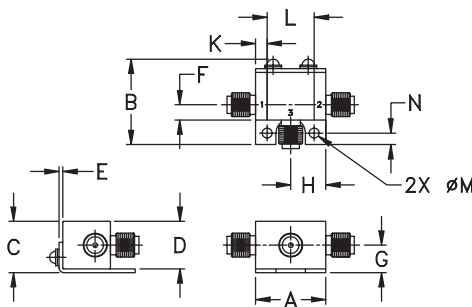
- cellular
- PCS
- instrumentation
- satellite communication

Electrical Specifications (T_{AMB}=25°C)

FREQUENCY (MHz)	CONVERSION LOSS (dB)	LO-RF ISOLATION (dB)		LO-IF ISOLATION (dB)		IP3 at center band (dBm)
		Typ.	Min.	Typ.	Min.	
300-4000	DC-950	35	17	16	7	12

1 dB COMP: +1 dBm typ.
m= mid band [2f_L to f_U/2]

Outline Drawing



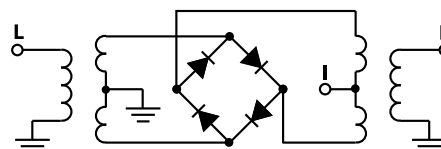
Outline Dimensions (inch/mm)

A	B	C	D	E	F	G
.74	.90	.54	.50	.04	.16	.29
18.80	22.86	13.72	12.70	1.02	4.06	7.37
H	J	K	L	M	N	wt
.37	--	.122	.496	.106	.122	grams
9.40	--	3.10	12.60	2.69	3.10	20.0

Typical Performance Data

Frequency (MHz)	Conversion Loss (dB)	Isolation L-R (dB)	Isolation L-I (dB)	VSWR RF Port (:1)	VSWR LO Port (:1)	
						LO +7dBm
300.10	330.10	5.34	45.30	34.86	2.04	5.44
450.10	480.10	4.98	41.41	32.02	1.54	3.61
600.10	630.10	5.02	39.35	28.89	1.73	3.17
781.35	751.35	5.11	37.95	28.09	2.81	2.51
943.85	913.85	6.22	37.02	28.05	3.48	1.97
1106.35	1076.35	6.36	39.38	23.65	2.77	1.70
1268.85	1238.85	6.45	42.76	20.82	2.59	1.80
1431.35	1401.35	5.84	40.76	18.75	3.06	2.17
1675.10	1645.10	7.37	37.69	16.07	1.89	2.72
1837.60	1807.60	7.03	37.60	14.80	2.87	3.10
2000.10	1970.10	7.54	37.84	13.54	3.39	3.13
2211.87	2181.87	7.80	37.90	12.47	3.19	3.29
2435.39	2405.39	7.94	38.15	11.59	3.90	3.27
2658.92	2628.92	7.71	39.90	10.55	4.70	3.21
2882.45	2852.45	7.49	44.86	9.56	4.72	2.76
3105.98	3075.98	6.88	38.93	10.01	4.06	1.96
3329.51	3299.51	6.50	39.01	11.39	2.83	1.89
3553.04	3523.04	6.26	41.76	14.66	2.41	2.39
3776.57	3746.57	6.25	38.02	19.20	1.48	3.74
4000.10	3970.10	6.55	34.99	25.24	1.19	5.27

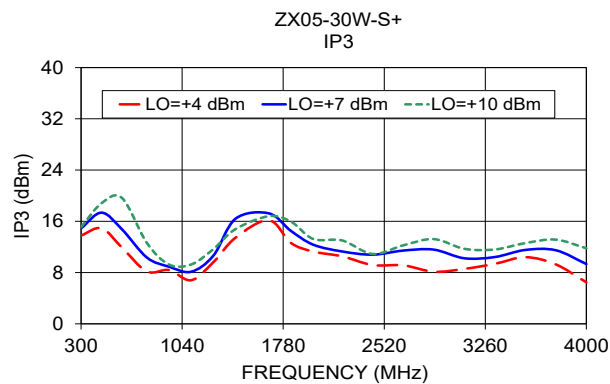
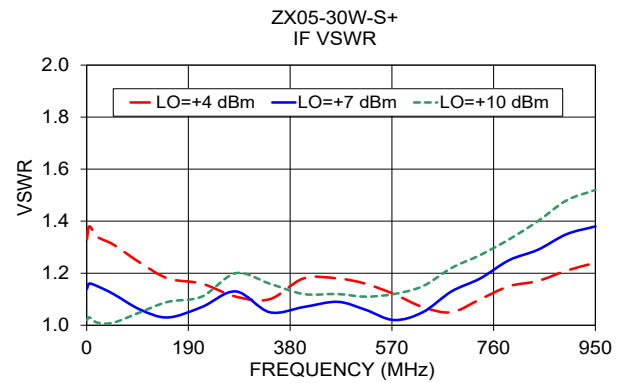
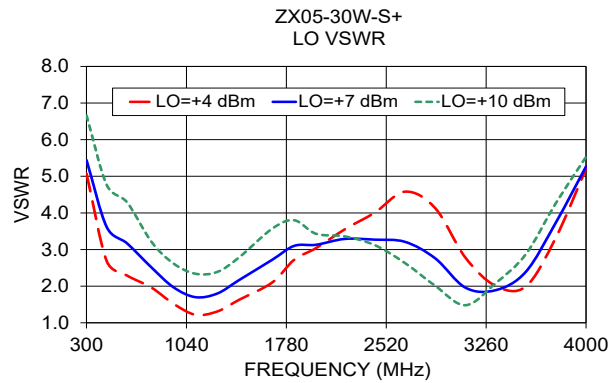
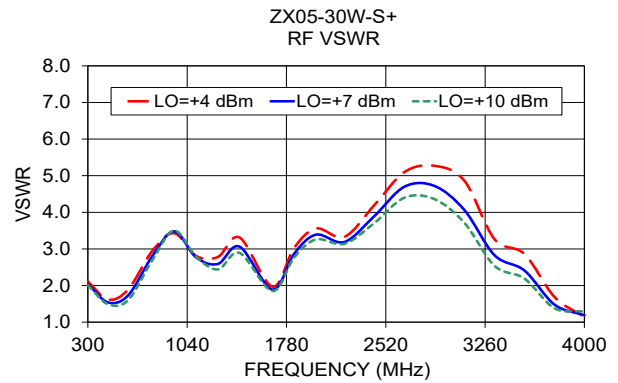
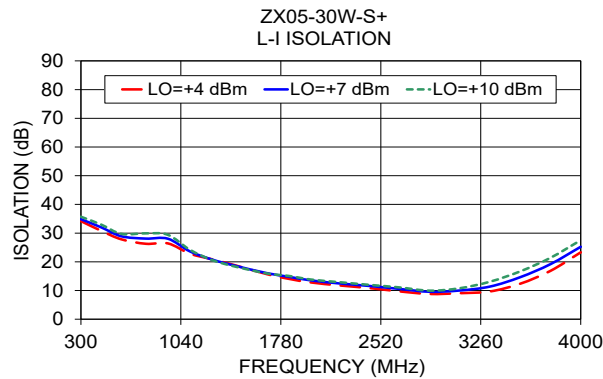
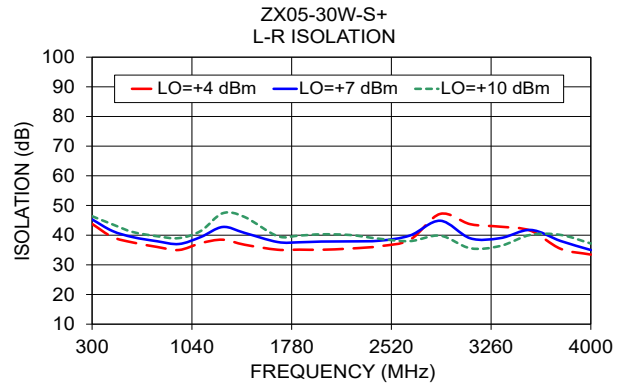
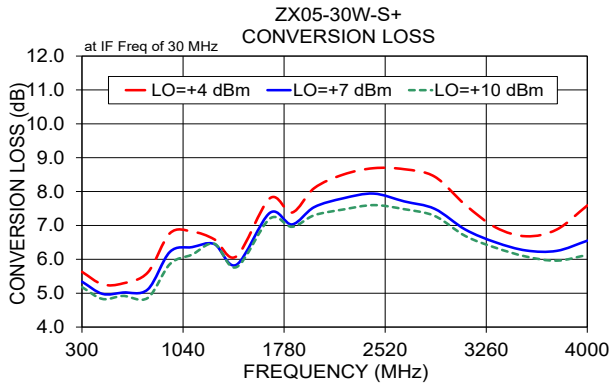
Electrical Schematic



Notes

- Performance and quality attributes and conditions not expressly stated in this specification document are intended to be excluded and do not form a part of this specification document.
- Electrical specifications and performance data contained in this specification document are based on Mini-Circuit's applicable established test performance criteria and measurement instructions.
- The parts covered by this specification document are subject to Mini-Circuit's standard limited warranty and terms and conditions (collectively, "Standard Terms"); Purchasers of this part are entitled to the rights and benefits contained therein. For a full statement of the Standard Terms and the exclusive rights and remedies thereunder, please visit Mini-Circuit's website at www.minicircuits.com/MCLStore/terms.jsp





Notes

- A. Performance and quality attributes and conditions not expressly stated in this specification document are intended to be excluded and do not form a part of this specification document.
- B. Electrical specifications and performance data contained in this specification document are based on Mini-Circuit's applicable established test performance criteria and measurement instructions.
- C. The parts covered by this specification document are subject to Mini-Circuits standard limited warranty and terms and conditions (collectively, "Standard Terms"); Purchasers of this part are entitled to the rights and benefits contained therein. For a full statement of the Standard Terms and the exclusive rights and remedies thereunder, please visit Mini-Circuits' website at www.minicircuits.com/MCLStore/terms.jsp

