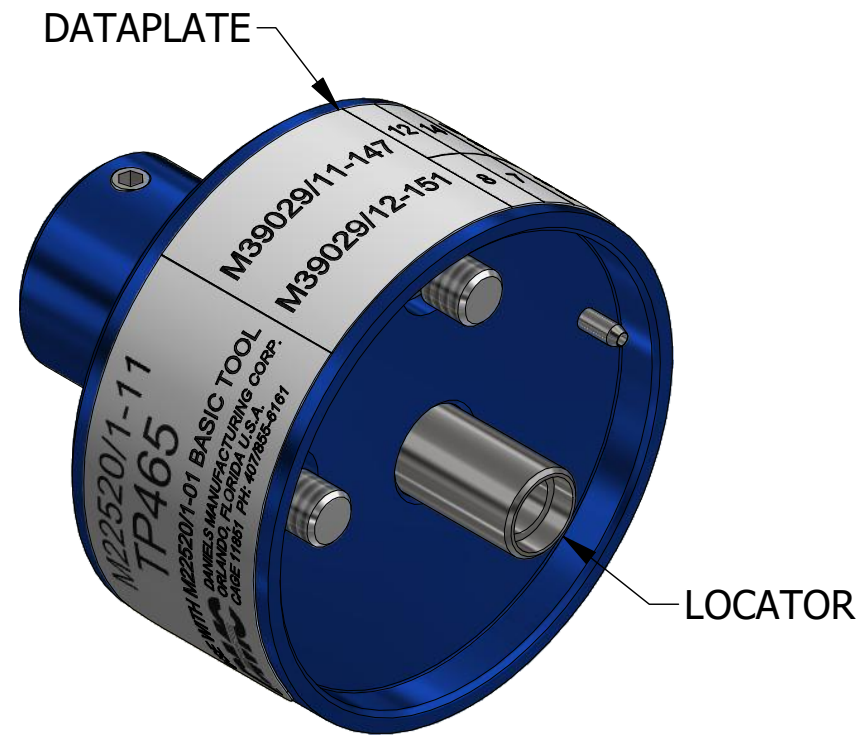
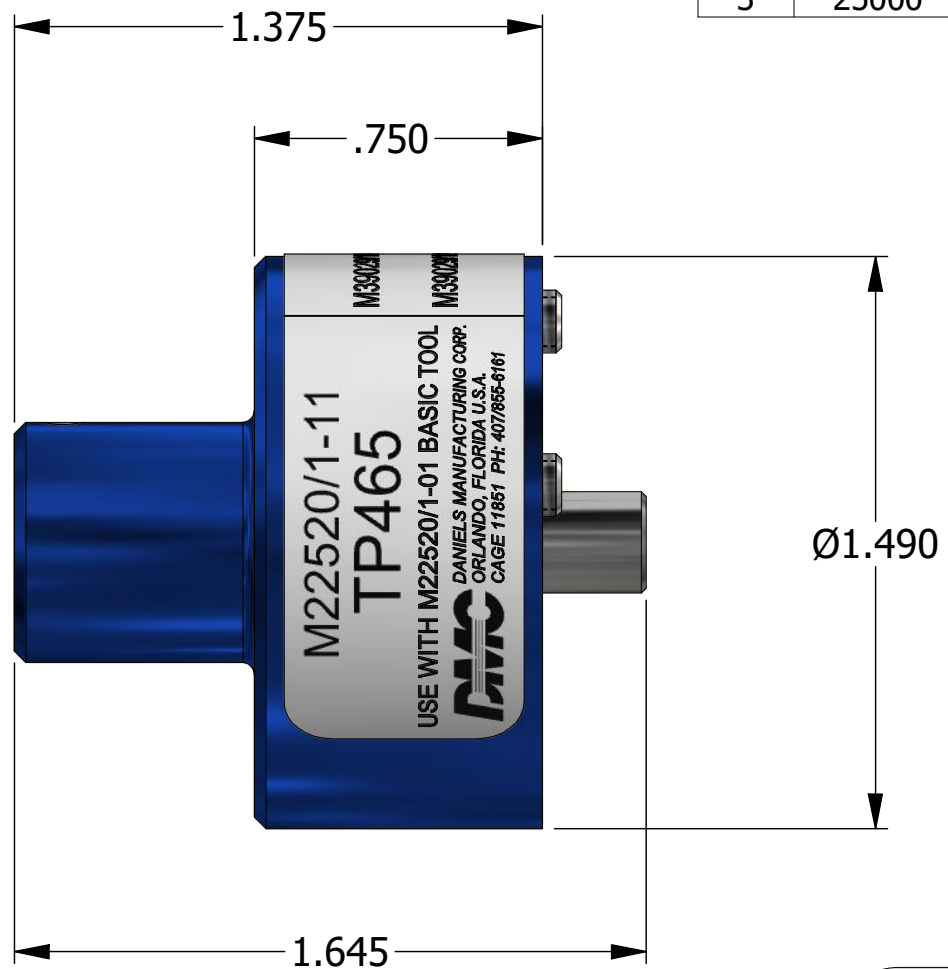


REVISIONS						
REV	ECO NO.	DESCRIPTION	BY	DATE	APP'D BY	DATE
1		REDRAWN	DH	10/5/1987	TS	10/5/1987
2	23573	UPDATED & REDRAWN	TonyD	3/2/2015		
3	25000	DATAPLATE UPDATED	TonyD	7/24/2020		



LOCATOR	
HOLE DIMENSIONS	ADDITIONAL FEATURES
Ø.172 ▽THRU	└┬┘Ø.218 ▽.070

M22520/1-11 TP465 USE WITH M22520/1-01 BASIC TOOL DANIELS MANUFACTURING CORP. ORLANDO, FLORIDA U.S.A. CAGE 11851 PH: 407/855-6161	M39029/11-147	12	14	WIRE SIZE
	M39029/12-151	8	7	SEL No.

DATAPLATE

MATERIAL	ITEM	PART NO.	QTY.	DESCRIPTION / REMARKS
N/A	DRN. DH CHK'D. DATE	DATE 10/5/1987		DANIELS MANUFACTURING CORP. ORLANDO, FLORIDA CAGE 11851 NOTE: THIS DRAWING IS AN OUTLINE DRAWING OF THE RESPECTIVE DMC PART NUMBER INDICATED. ACTUAL DMC PART NUMBER IS CAD PART NUMBER WITHOUT THE "-ENV" SUFFIX SINGLE POSITION HEAD (M22520/1-11) ENVELOPE DRAWING WHERE USED: AF8
HEAT TREAT	N/A			
FINISH	N/A			
RESTRICTED & CONFIDENTIAL CONFIDENTIAL PROPERTY OF DANIELS MANUFACTURING CORP. NOT TO BE DISCLOSED TO OTHERS. REPRODUCTION OR USED FOR ANY OTHER PURPOSE EXCEPT AS AUTHORIZED IN WRITING BY DANIELS MANUFACTURING. MUST BE RETURNED TO DANIELS MANUFACTURING CORP. ON COMPLETION OF ORDER OR PURPOSES FOR WHICH LENT. CREATED FROM AN INVENTOR MODEL. CHANGES MUST BE REFLECTED IN THE 3D PART DO NOT SCALE DRAWING				TITLE: TP465-ENV SIZE: B SCALE: 2:1 CAD P/N: TP465-ENV SHEET: 1 OF 1 DWG. NO.: TP465 REV.: 3

**UNCONTROLLED DOCUMENT
WILL NOT BE UPDATED**
DIMENSIONS IN INCHES - UNLESS OTHERWISE SPECIFIED