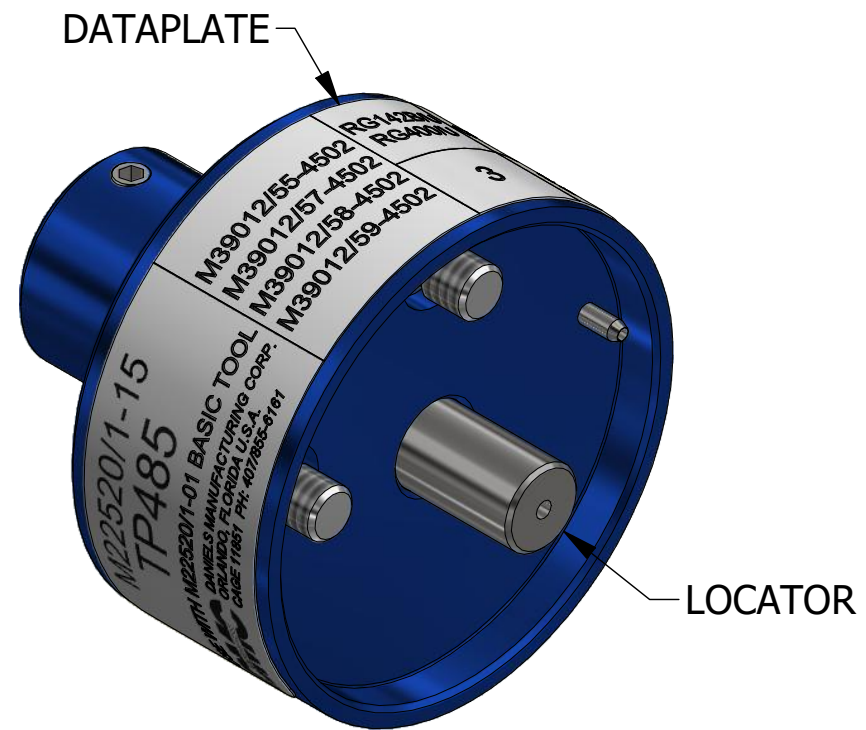
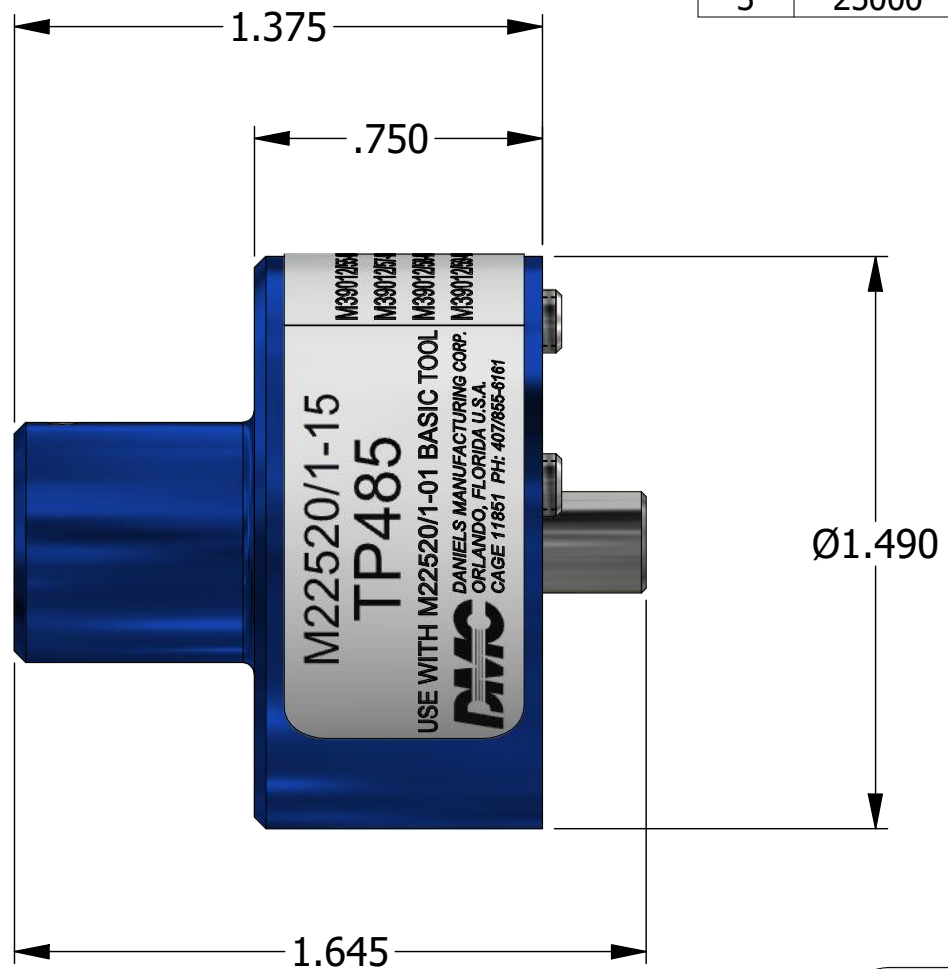


REVISIONS						
REV	ECO NO.	DESCRIPTION	BY	DATE	APP'D BY	DATE
1		ORIGINAL RELEASE	AAM	9/30/1998	DE	9/30/1998
2	23573	UPDATED & REDRAWN	TonyD	3/24/2015		
3	25000	DATAPLATE UPDATED	TonyD	7/24/2020		



LOCATOR	
HOLE DIMENSIONS	ADDITIONAL FEATURES
Ø.039 ▽.250	└┐Ø.055 ▽.140

M22520/1-15 TP485 USE WITH M22520/1-01 BASIC TOOL DANIELS MANUFACTURING CORP. ORLANDO, FLORIDA U.S.A. CAGE 11851 PH: 407/855-6161	M39012/55-4502	RG142B/U	CABLE
	M39012/57-4502	RG400/U	
	M39012/58-4502		
	M39012/59-4502		
		3	SEL No.

DATAPLATE

**UNCONTROLLED DOCUMENT
WILL NOT BE UPDATED**
DIMENSIONS IN INCHES - UNLESS OTHERWISE SPECIFIED

RESTRICTED & CONFIDENTIAL
 CONFIDENTIAL PROPERTY OF DANIELS MANUFACTURING CORP. NOT TO BE DISCLOSED TO OTHERS. REPRODUCTION OR USED FOR ANY OTHER PURPOSE EXCEPT AS AUTHORIZED IN WRITING BY DANIELS MANUFACTURING. MUST BE RETURNED TO DANIELS MANUFACTURING CORP. ON COMPLETION OF ORDER OR PURPOSES FOR WHICH LENT.
 CREATED FROM AN INVENTOR MODEL. CHANGES MUST BE REFLECTED IN THE 3D PART
 DO NOT SCALE DRAWING

MATERIAL	ITEM	PART NO.	QTY.	DESCRIPTION / REMARKS
N/A	DRN. A. MOO-YOUNG CHK'D.	DATE 9/30/1988 DATE		DANIELS MANUFACTURING CORP. ORLANDO, FLORIDA CAGE 11851
HEAT TREAT				NOTE: THIS DRAWING IS AN OUTLINE DRAWING OF THE RESPECTIVE DMC PART NUMBER INDICATED. ACTUAL DMC PART NUMBER IS CAD PART NUMBER WITHOUT THE "-ENV" SUFFIX
FINISH				TITLE SINGLE POSITION HEAD (M22520/1-15) ENVELOPE DRAWING WHERE USED: AF8
				SIZE B SCALE 2:1 CAD P/N TP485-ENV SHEET 1 OF 1 REV. 3
				DWG. NO. TP485